

STAT5A antibody

Catalog Number: 115691

Product name

STAT5A antibody

WB: 1:500-1:5000

IP: 1:500-1:5000

Specificity

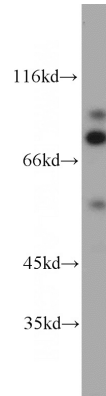
Human, Mouse, Rat; other species not tested.

IHC: 1:20-1:200

Antibody description

STAT5A Rabbit Polyclonal antibody. Positive IHC detected in human breast cancer tissue, human cervical cancer tissue. Positive FC detected in MCF-7 cells. Positive IP detected in 3T3-L1 cells. Positive WB detected in K-562 cells, 3T3-L1 cells, DU 145 cells. Observed molecular weight by Western-blot: 90-95 kDa, 50-55 kDa

Validations



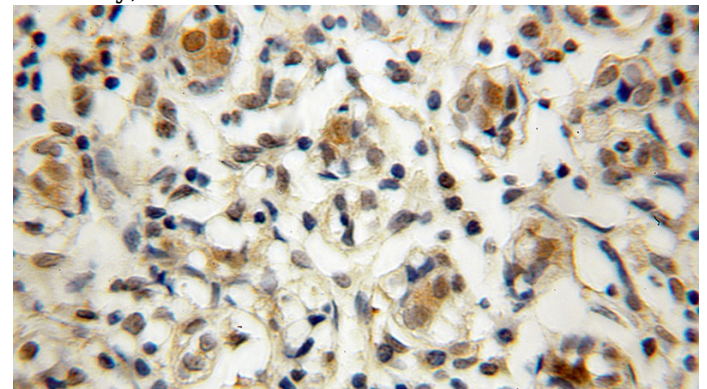
Preparation

This antibody was obtained by immunization of STAT5A recombinant protein (Accession Number: NM_003152). Purification method: Antigen affinity purified.

K-562 cells were subjected to SDS PAGE followed by western blot with Catalog No:115691(STAT5A antibody) at dilution of 1:1000

Formulation

PBS with 0.02% sodium azide and 50% glycerol pH 7.3.



Storage

Store at -20°C. DO NOT ALIQUOT

Clonality

Polyclonal

Immunohistochemical of paraffin-embedded human breast cancer using Catalog No:115691(STAT5A antibody) at dilution of 1:100 (under 10x lens)

Ig Type

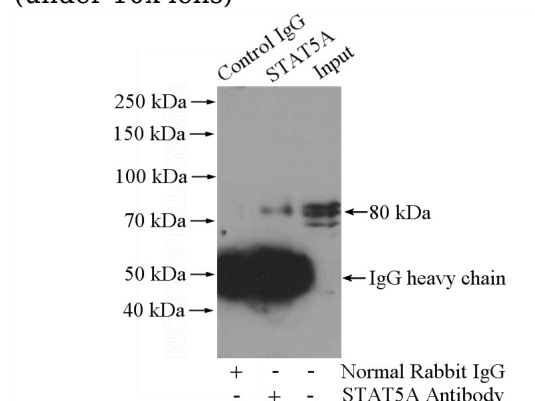
Rabbit IgG

Applications

ELISA, WB, IHC, FC, IP

Dilutions

Recommended Dilution:

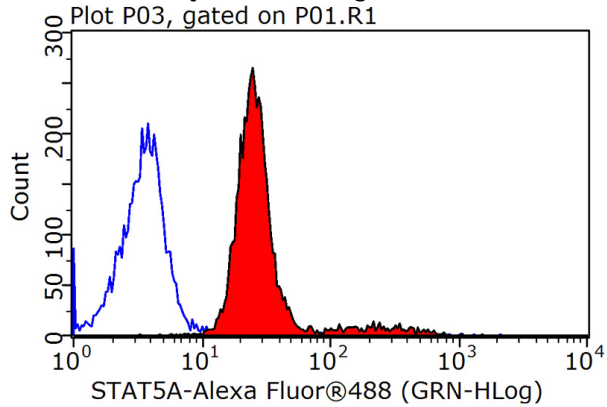


STAT5A antibody



Catalog Number: 115691

IP Result of anti-STAT5A (IP:Catalog No:115691, 4ug; Detection:Catalog No:115691 1:1000) with 3T3-L1 cells lysate 3200ug.



1X10⁶ MCF-7 cells were stained with 0.2ug STAT5A antibody (Catalog No:115691, red) and control antibody (blue). Fixed with 90% MeOH blocked with 3% BSA (30 min). Alexa Fluor 488-conjugated AffiniPure Goat Anti-Rabbit IgG(H+L) with dilution 1:1500.