

REPS2 antibody

Catalog Number: 114691

Product name

REPS2 antibody

Specificity

human, mouse; other species not tested.

Antibody description

REPS2 Rabbit Polyclonal antibody. Positive WB detected in mouse brain tissue, mouse kidney tissue, human testis tissue. Positive IF detected in HepG2. Observed molecular weight by Western-blot: 72kd,55kd,30kd

Preparation

This antibody was obtained by immunization of Peptide (Accession Number: NM_004726). Purification method: Antigen affinity purified.

Formulation

PBS with 0.02% sodium azide and 50% glycerol pH 7.3.

Storage

Store at -20°C. DO NOT ALIQUOT

Clonality

Polyclonal

Ig Type

Rabbit IgG

Applications

ELISA, WB, IF

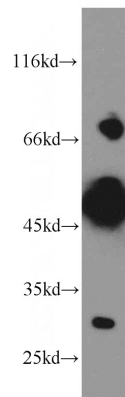
Dilutions

Recommended Dilution:

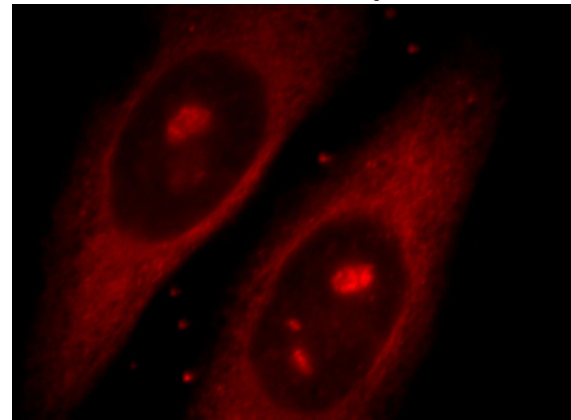
WB: 1:500-1:5000

IF: 1:10-1:100

Validations



mouse brain tissue were subjected to SDS PAGE followed by western blot with Catalog No:114691(REPS2 antibody) at dilution of 1:300



Immunofluorescent analysis of HepG2 cells, using REPS2 antibody Catalog No:114691 at 1:25 dilution and Rhodamine-labeled goat anti-rabbit IgG (red).