

# MMACHC antibody



Catalog Number: 112691

## Product name

MMACHC antibody

## Immunogen

[Human MMACHC Recombinant protein \(His tag\)](#)

## Specificity

Human, Mouse, Rat; other species not tested.

## Antibody description

MMACHC Rabbit Polyclonal antibody. Positive WB detected in HeLa cells, Raji cells. Observed molecular weight by Western-blot: 32 kDa

## Preparation

This antibody was obtained by immunization of MMACHC recombinant protein (Accession Number: NM\_001330540). Purification method: Antigen affinity purified.

## Formulation

PBS with 0.02% sodium azide and 50% glycerol pH 7.3.

## Storage

Store at -20°C. DO NOT ALIQUOT

## Clonality

Polyclonal

## Ig Type

Rabbit IgG

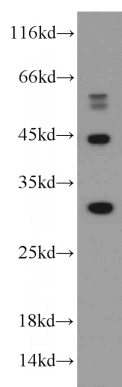
## Applications

ELISA, WB

## Dilutions

Recommended Dilution:  
WB: 1:200-1:2000

## Validations



HeLa cells were subjected to SDS PAGE followed by western blot with Catalog No:112691(MMACHC antibody) at dilution of 1:300