

# GRM4 Polyclonal Antibody



Catalog Number: 165291

## Product name

GRM4 Polyclonal Antibody

## Specificity

Human, Mouse, Rat

## Antibody description

Polyclonal antibody to GRM4

## Preparation

Antigen: Recombinant fusion protein containing a sequence corresponding to amino acids 33-290 of human GRM4 (NP\_000832.1).

## Formulation

PBS with 0.02% sodium azide, 50% glycerol, pH7.3.

## Storage

Store at -20°C. Avoid freeze / thaw cycles.

## Clonality

Polyclonal

## Ig Type

Rabbit IgG

## Applications

WB, IHC, IF

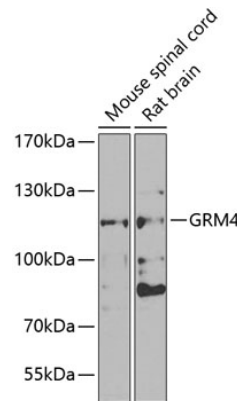
## Dilutions

WB 1:500 - 1:2000

IHC 1:50 - 1:200

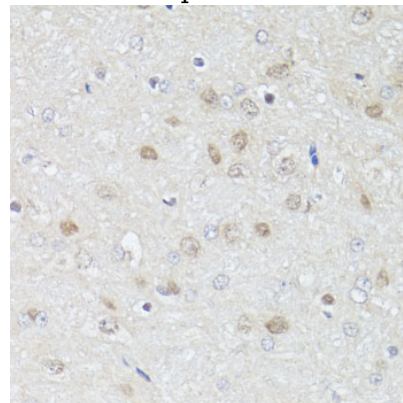
IF 1:50 - 1:100

## Validations



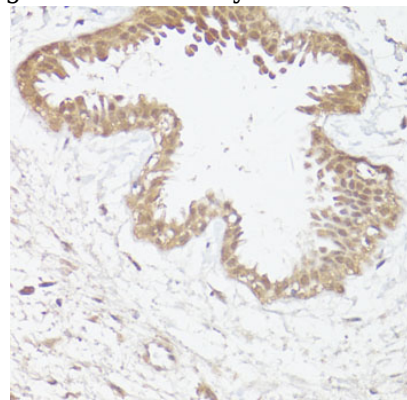
Western blot - GRM4 Polyclonal Antibody

Western blot analysis of extracts of various cell lines, using GRM4 antibody at 1:1000 dilution. Secondary antibody: HRP Goat Anti-Rabbit IgG (H+L) at 1:10000 dilution. Lysates/proteins: 25ug per lane. Blocking buffer: 3% nonfat dry milk in TBST. Detection: ECL Basic Kit. Exposure time: 90s.



Immunohistochemistry - GRM4 Polyclonal Antibody

Immunohistochemistry of paraffin-embedded rat brain using PHF19 antibody at dilution of 1:100



(40x lens).

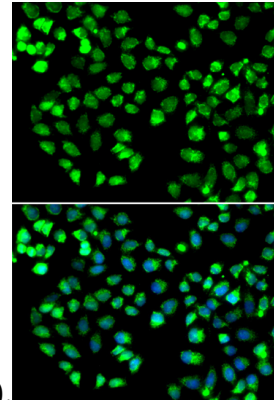
# GRM4 Polyclonal Antibody

Catalog Number: 165291

---

Immunohistochemistry - GRM4 Polyclonal Antibody

Immunohistochemistry of paraffin-embedded human breast using PHF19 antibody at dilution of



1:100 (40x lens).

Immunofluorescence - GRM4 Polyclonal Antibody

Immunofluorescence analysis of MCF-7 cells using GRM4 antibody . Blue: DAPI for nuclear staining.