

# HEPACAM antibody



Catalog Number: 111291

## Product name

HEPACAM antibody

WB: 1:200-1:2000

IP: 1:200-1:2000

## Specificity

Human, Mouse, Rat; other species not tested.

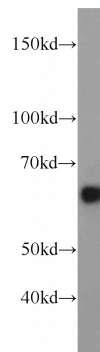
IHC: 1:20-1:200

IF: 1:10-1:100

## Antibody description

HEPACAM Rabbit Polyclonal antibody. Positive WB detected in mouse brain tissue, HepG2 cells, MCF7 cells, rat brain tissue, SH-SY5Y cells. Positive IP detected in rat brain tissue. Positive IF detected in MCF-7 cells. Positive IHC detected in human liver tissue. Observed molecular weight by Western-blot: 46-72 kDa

## Validations



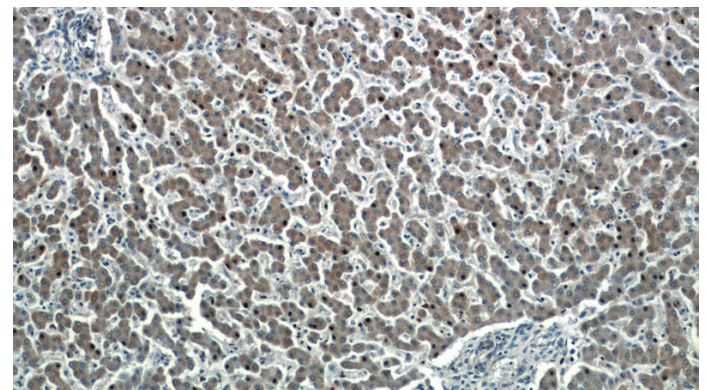
## Preparation

This antibody was obtained by immunization of HEPACAM recombinant protein (Accession Number: NM\_152722). Purification method: Antigen affinity purified.

mouse brain tissue were subjected to SDS PAGE followed by western blot with Catalog No:111291(HEPACAM antibody) at dilution of 1:500

## Formulation

PBS with 0.02% sodium azide and 50% glycerol pH 7.3.



## Storage

Store at -20°C. DO NOT ALIQUOT

## Clonality

Polyclonal

## Ig Type

Rabbit IgG

Immunohistochemistry of paraffin-embedded human liver tissue slide using Catalog No:111291(HEPACAM Antibody) at dilution of 1:50 (under 10x lens)

## Applications

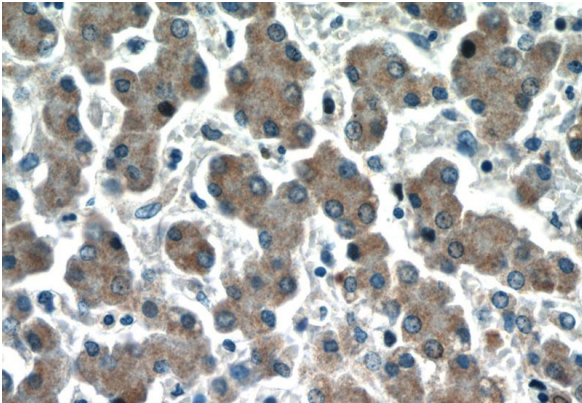
ELISA, IF, IHC, WB, IP

## Dilutions

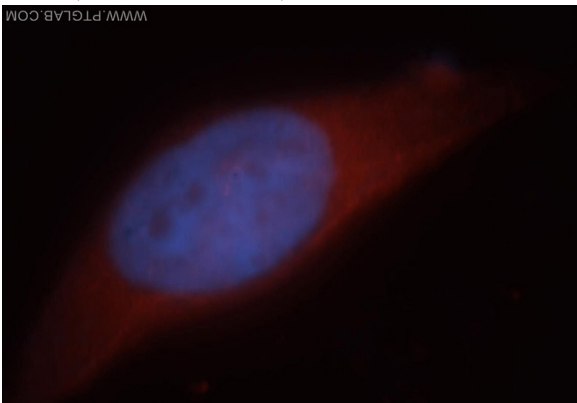
Recommended Dilution:

# HEPACAM antibody

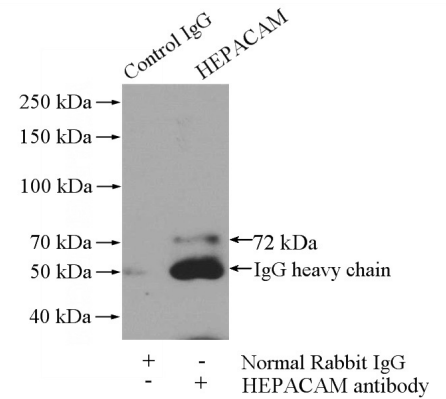
Catalog Number: 111291



Immunohistochemistry of paraffin-embedded human liver tissue slide using Catalog No:111291(HEPACAM Antibody) at dilution of 1:50 (under 40x lens)



Immunofluorescent analysis of MCF-7 cells, using HEPACAM antibody Catalog No:111291 at 1:25 dilution and Rhodamine-labeled goat anti-rabbit IgG (red).Blue pseudocolor = DAPI (fluorescent



DNA dye).

IP Result of anti-HEPACAM (IP:Catalog No:111291, 4ug; Detection:Catalog No:111291 1:500) with rat brain tissue lysate 4000ug.