

Anti-Mitofilin Rabbit antibody



Catalog Number: 168991

Product name

Anti-Mitofilin Rabbit antibody

Specificity

Human

Antibody description

Mitofilin Rabbit monoclonal antibody

Preparation

Antigen: A synthetic peptide of human Mitofilin

Formulation

50nM Tris-Glycine(pH 7.4), 0.15M NaCl, 40%Glycerol, 0.01% sodium azide and 0.05% BSA.

Storage

Store at 4°C short term. Store at -20°C long term. Avoid freeze / thaw cycle.

Clonality

Monoclonal

Ig Type

Rabbit IgG

Applications

WB, IHC-P, ICC/IF, FC

Dilutions

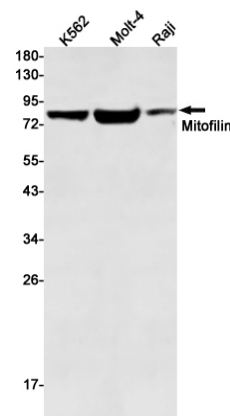
WB: 1/1000-1/5000

IHC: 1/50

ICC/IF: 1/100

FC: 1/20

Validations



Western blot detection of Mitofilin in K562, Molt-4, Raji cell lysates using Mitofilin Rabbit mAb(1:500 diluted). Predicted band size: 84kDa. Observed band size: 84kDa.