

# XPA antibody

Catalog Number: 116991

## Product name

XPA antibody

## Specificity

Human, Mouse, Rat; other species not tested.

## Antibody description

XPA Rabbit Polyclonal antibody. Positive WB detected in L02 cells, HEK-293 cells, HeLa cells, MCF-7 cells. Positive IF detected in HepG2 cells. Observed molecular weight by Western-blot: 40 kDa

## Preparation

This antibody was obtained by immunization of XPA recombinant protein (Accession Number: NM\_000380). Purification method: Antigen affinity purified.

## Formulation

PBS with 0.1% sodium azide and 50% glycerol pH 7.3.

## Storage

Store at -20°C. DO NOT ALIQUOT

## Clonality

Polyclonal

## Ig Type

Rabbit IgG

## Applications

ELISA, WB, IF

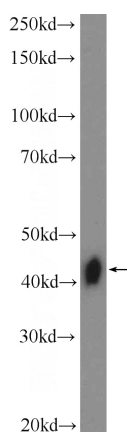
## Dilutions

Recommended Dilution:

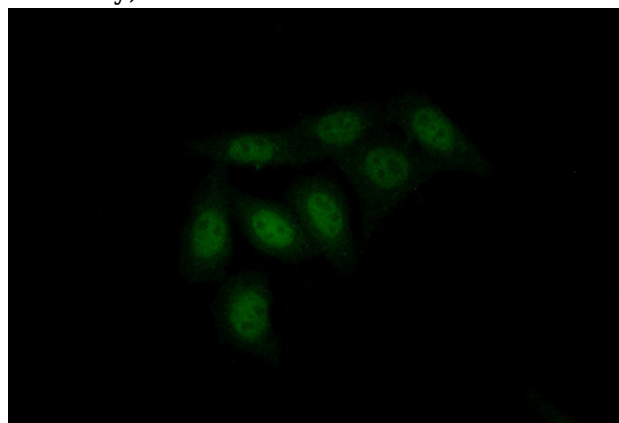
WB: 1:200-1:2000

IF: 1:50-1:500

## Validations



L02 cells were subjected to SDS PAGE followed by western blot with Catalog No:116991(XPA Antibody) at dilution of 1:600



Immunofluorescent analysis of (10% Formaldehyde) fixed HepG2 cells using Catalog No:116991(XPA Antibody) at dilution of 1:50 and Alexa Fluor 488-conjugated AffiniPure Goat Anti-Rabbit IgG(H+L)