

# SCFD1 antibody

Catalog Number: 114991

## Product name

SCFD1 antibody

WB: 1:500-1:5000

IP: 1:200-1:2000

## Specificity

Human, Mouse, Rat; other species not tested.

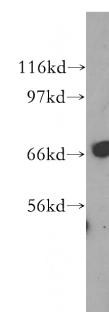
IHC: 1:20-1:200

IF: 1:10-1:100

## Antibody description

SCFD1 Rabbit Polyclonal antibody. Positive IHC detected in human endometrial cancer tissue. Positive IF detected in HeLa cells. Positive IP detected in HeLa cells. Positive WB detected in A549 cells, human kidney tissue, human liver tissue. Observed molecular weight by Western-blot: 72kd

## Validations



## Preparation

This antibody was obtained by immunization of SCFD1 recombinant protein (Accession Number: NM\_016106). Purification method: Antigen affinity purified.

A549 cells were subjected to SDS PAGE followed by western blot with Catalog No:114991(SCFD1 antibody) at dilution of 1:500

## Formulation

PBS with 0.1% sodium azide and 50% glycerol pH 7.3.

## Storage

Store at -20°C. DO NOT ALIQUOT

## Clonality

Polyclonal

## Ig Type

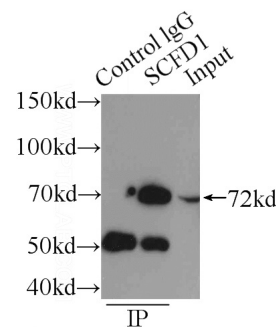
Rabbit IgG

## Applications

ELISA, WB, IHC, IF, IP

## Dilutions

Recommended Dilution:

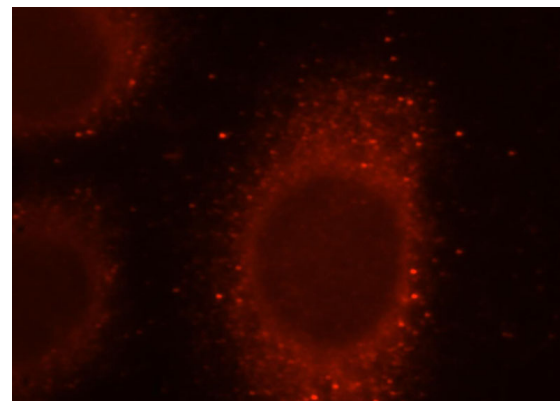
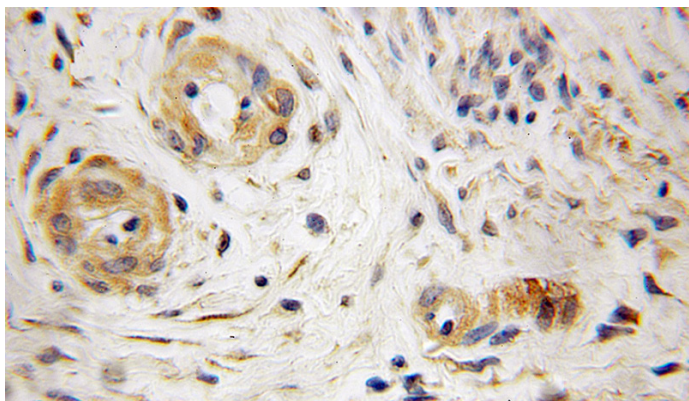


IP Result of anti-SCFD1 (IP:Catalog No:114991, 3ug; Detection:Catalog No:114991 1:500) with HeLa cells lysate 2150ug.

# SCFD1 antibody

Catalog Number: 114991

---



Immunohistochemical of paraffin-embedded human endometrial cancer using Catalog No:114991(SCFD1 antibody) at dilution of 1:50 (under 10x lens)

Immunofluorescent analysis of HeLa cells, using SCFD1 antibody Catalog No:114991 at 1:25 dilution and Rhodamine-labeled goat anti-rabbit IgG (red).