

# Myoferlin antibody



Catalog Number: 112991

## Product name

Myoferlin antibody

IHC: 1:20-1:200

IF: 1:10-1:100

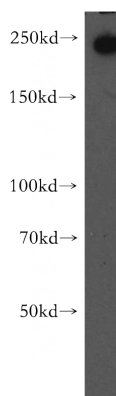
## Specificity

Human; other species not tested.

## Validations

## Antibody description

Myoferlin Rabbit Polyclonal antibody. Positive WB detected in A549 cells. Positive IF detected in Hela cells. Positive IHC detected in human placenta tissue. Positive FC detected in HeLa cells. Observed molecular weight by Western-blot: 235 kDa



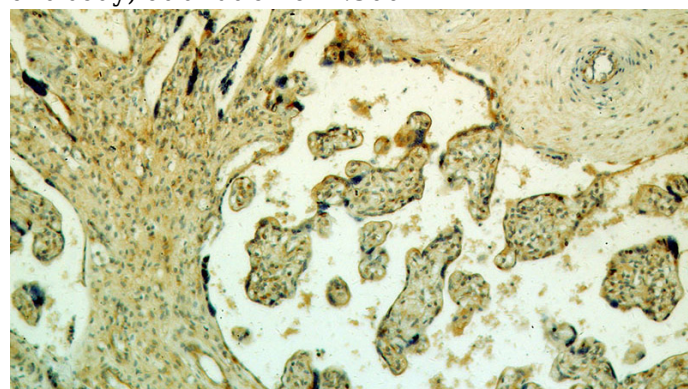
## Preparation

This antibody was obtained by immunization of Peptide (Accession Number: NM\_133337). Purification method: Antigen affinity purified.

A549 cells were subjected to SDS PAGE followed by western blot with Catalog No:112991(MYOF antibody) at dilution of 1:300

## Formulation

PBS with 0.02% sodium azide and 50% glycerol pH 7.3.



## Storage

Store at -20°C. DO NOT ALIQUOT

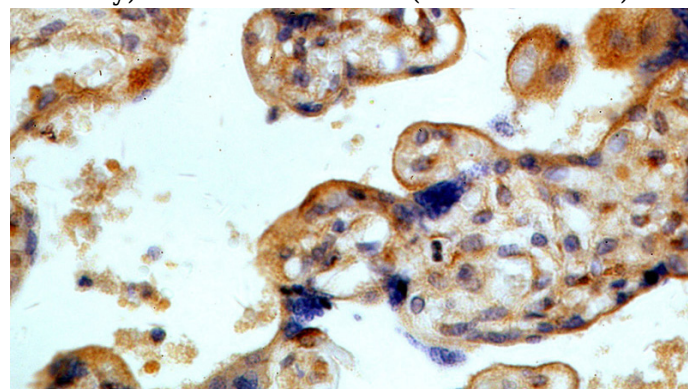
## Clonality

Polyclonal

Immunohistochemical of paraffin-embedded human placenta using Catalog No:112991(MYOF antibody) at dilution of 1:100 (under 10x lens)

## Ig Type

Rabbit IgG



## Applications

ELISA, WB, IHC, IF, FC

## Dilutions

Recommended Dilution:

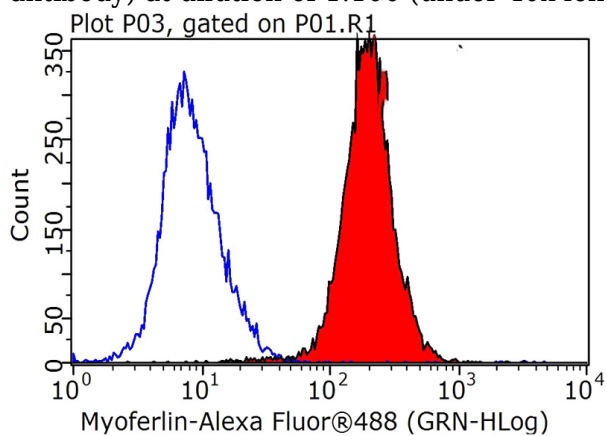
WB: 1:500-1:5000

Immunohistochemical of paraffin-embedded human placenta using Catalog No:112991(MYOF

# Myoferlin antibody

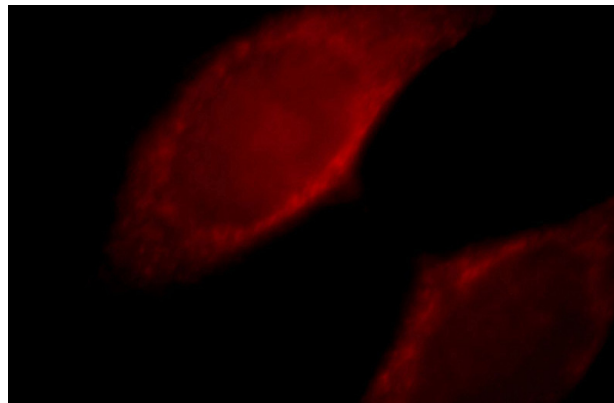
Catalog Number: 112991

antibody) at dilution of 1:100 (under 40x lens)



1X10<sup>6</sup> HeLa cells were stained with 0.2ug MYOF antibody (Catalog No:112991, red) and control antibody (blue). Fixed with 90% MeOH blocked with 3% BSA (30 min). Alexa Fluor 488-

conjugated AffiniPure Goat Anti-Rabbit IgG(H+L) with dilution 1:1000.



Immunofluorescent analysis of HeLa cells, using MYOF antibody Catalog No:112991 at 1:25 dilution and Rhodamine-labeled goat anti-rabbit IgG (red).