

# BRK antibody

Catalog Number: 108591

## Product name

BRK antibody

IP: 1:200-1:2000

IHC: 1:20-1:200

## Specificity

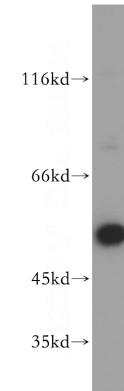
Human, Mouse, Rat; other species not tested.

IF: 1:10-1:100

## Antibody description

BRK Rabbit Polyclonal antibody. Positive IP detected in HeLa cells. Positive WB detected in MCF7 cells, HeLa cells, mouse spleen tissue. Positive IF detected in MCF-7 cells. Positive IHC detected in human colon tissue. Observed molecular weight by Western-blot: 52 kDa

## Validations



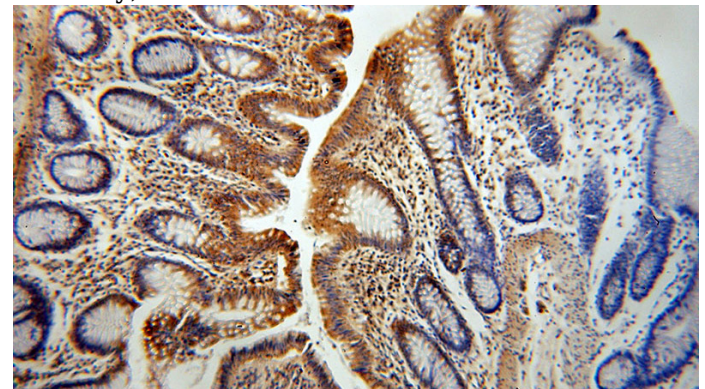
## Preparation

This antibody was obtained by immunization of Peptide (Accession Number: NM\_005975). Purification method: Antigen affinity purified.

MCF7 cells were subjected to SDS PAGE followed by western blot with Catalog No:117238(PTK6 antibody) at dilution of 1:500

## Formulation

PBS with 0.02% sodium azide and 50% glycerol pH 7.3.



## Storage

Store at -20°C. DO NOT ALIQUOT

## Clonality

Polyclonal

## Ig Type

Rabbit IgG

## Applications

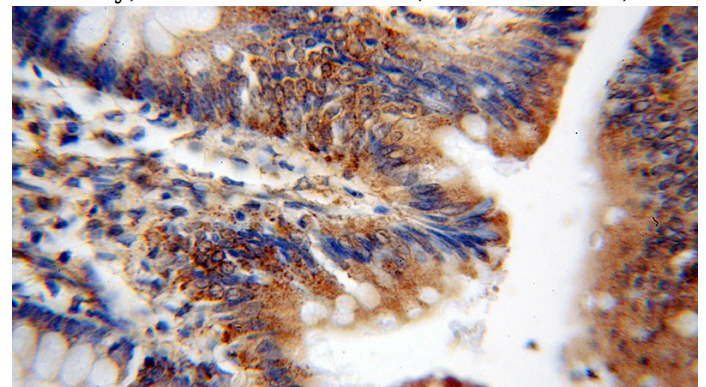
ELISA, WB, IHC, IF, IP

## Dilutions

Recommended Dilution:

WB: 1:500-1:5000

Immunohistochemical of paraffin-embedded human colon using Catalog No:117238(PTK6 antibody) at dilution of 1:100 (under 10x lens)

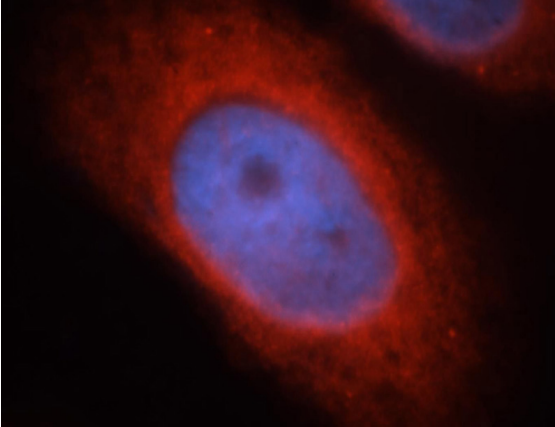


Immunohistochemical of paraffin-embedded

# BRK antibody

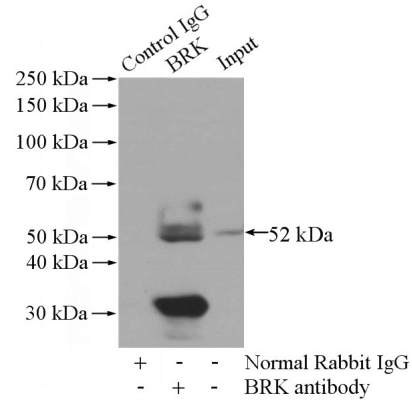
Catalog Number: 108591

human colon using Catalog No:117238(PTK6 antibody) at dilution of 1:100 (under 40x lens)



Immunofluorescent analysis of MCF-7 cells, using PTK6 antibody Catalog No:117238 at 1:25 dilution

and Rhodamine-labeled goat anti-rabbit IgG (red). Blue pseudocolor = DAPI (fluorescent DNA dye).



IP Result of anti-PTK6 (IP:Catalog No:117238, 4ug; Detection:Catalog No:117238 1:800) with HeLa cells lysate 3440ug.