

# Anti-Phospho-c-Jun (Ser63) Rabbit antibody



Catalog Number: 168591

## Product name

Anti-Phospho-c-Jun (Ser63) Rabbit antibody

## Ig Type

Rabbit IgG

## Specificity

Human, Mouse, Rat

## Applications

WB, IHC-P, ICC/IF

## Antibody description

Phospho-c-Jun (Ser63) Rabbit monoclonal antibody

## Dilutions

1:1000

1:20

1:20

## Preparation

Antigen: A synthetic phosphopeptide corresponding to residues surrounding Ser63 of human c-Jun

## Validations

## Formulation

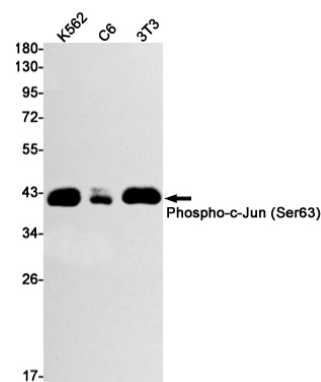
Supplied in 50nM Tris-Glycine(pH 7.4), 0.15M NaCl, 40%Glycerol, 0.01% sodium azide and 0.05% BSA.

## Storage

Store at 4°C short term. Aliquot and store at -20°C long term. Avoid freeze / thaw cycle.

## Clonality

Monoclonal



Western blot detection of Phospho-c-Jun (Ser63) in K562, C6, 3T3 cell lysates using Phospho-c-Jun (Ser63) Rabbit mAb(1:1000 diluted). Predicted band size: 36kDa. Observed band size: 43kDa.