

# SFTPC Polyclonal Antibody



Catalog Number: 163591

## Product name

SFTPC Polyclonal Antibody

## Specificity

Human, Mouse, Rat

## Antibody description

Polyclonal antibody to SFTPC

## Preparation

Antigen: Recombinant fusion protein containing a sequence corresponding to amino acids 1-197 of human SFTPC (NP\_001165881.1).

## Formulation

PBS with 0.02% sodium azide, 50% glycerol, pH7.3.

## Storage

Store at -20°C. Avoid freeze / thaw cycles.

## Clonality

Polyclonal

## Ig Type

Rabbit IgG

## Applications

WB, IHC, IF

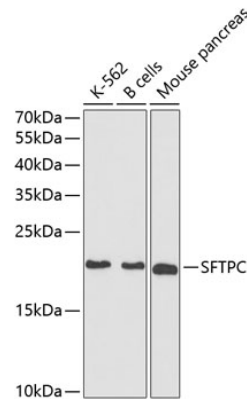
## Dilutions

WB 1:500 - 1:2000

IHC 1:50 - 1:200

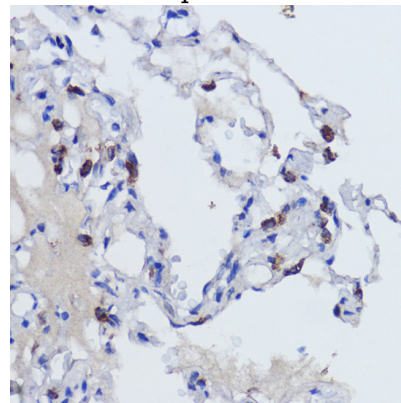
IF 1:50 - 1:200

## Validations



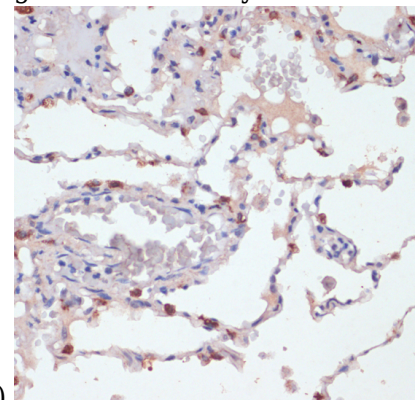
## Western blot - SFTPC Polyclonal Antibody

Western blot analysis of extracts of various cell lines, using SFTPC antibody at 1:1000 dilution. Secondary antibody: HRP Goat Anti-Rabbit IgG (H+L) at 1:10000 dilution. Lysates/proteins: 25ug per lane. Blocking buffer: 3% nonfat dry milk in TBST. Detection: ECL Basic Kit. Exposure time: 90s.



## Immunohistochemistry - SFTPC Polyclonal Antibody

Immunohistochemistry of paraffin-embedded human lung using SFTPC antibody at dilution of



1:200 (40x lens).

# SFTPC Polyclonal Antibody

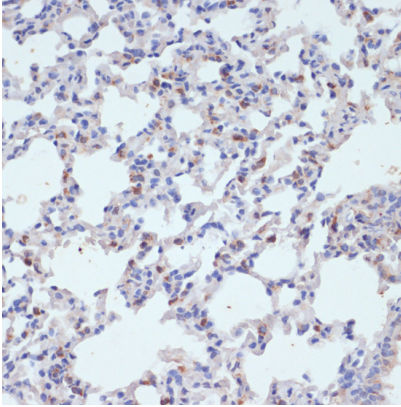


Catalog Number: 163591

---

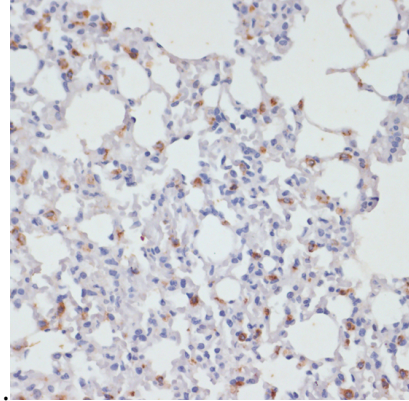
Immunohistochemistry - SFTPC Polyclonal Antibody

Immunohistochemistry of paraffin-embedded human lung cancer using SFTPC antibody at dilution of 1:200 (40x lens).



Immunohistochemistry - SFTPC Polyclonal Antibody

Immunohistochemistry of paraffin-embedded rat lung using SFTPC antibody at dilution of 1:200



(40x lens).

Immunohistochemistry - SFTPC Polyclonal Antibody

Immunohistochemistry of paraffin-embedded mouse lung using SFTPC antibody at dilution of 1:200 (40x lens).