

Human Cathepsin V/Cathepsin L2/Preproprotein (His Tag)



Catalog Number: 500591

General Information

Protein Construction

A DNA sequence encoding the full length of human cathepsin L2 (NP_001324.2) (Met 1-Val 334) was expressed, with a C-terminal polyhistidine tag.

Organism

Human

Expression Host

Human Cells

QC Testing

Activity

Measured by its ability to cleave the fluorogenic peptide substrate Z-LR-AMC, (R&D Systems, Catalog # ES008). The specific activity is >1000 pmoles/min/ μ g.

Purity

> 95 % as determined by SDS-PAGE

Endotoxin

< 1.0 EU per μ g of the protein as determined by the LAL method

Stability

Samples are stable for up to twelve months from date of receipt at -70°C

Predicted N terminal

Val 18

Molecular Mass

The recombinant pro form of human cathepsin V comprises 328 amino acids and predicts a molecular mass of 37.1 kDa. As a result of glycosylation, it migrates as an approximately 40 kDa band in SDS-PAGE under reducing conditions.

Formulation

Lyophilized from sterile PBS, pH 7.4

1. 5 % trehalose and mannitol are added as protectants before lyophilization.
2. Please contact us for any concerns or special requirements.

Usage Guide

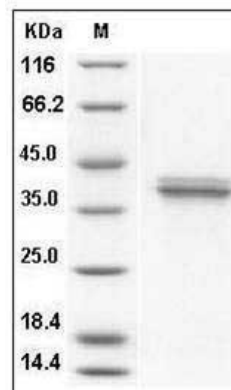
Storage

Store it under sterile conditions at -20°C to -80°C. It is recommended that the protein be aliquoted for optimal storage. Avoid repeated freeze-thaw cycles.

Reconstitution

Adding sterile water, prepare a stock solution of 0.25 mg/ml. Concentration is measured by UV-Vis.

SDS-PAGE



Human Cathepsin V / Cathepsin L2 / Preproprotein Protein (His Tag) SDS-PAGE