

EPLIN antibody

Catalog Number: 107191

Product name

EPLIN antibody

IHC: 1:20-1:200

IF: 1:20-1:200

Specificity

Human; other species not tested.

Antibody description

EPLIN Mouse Monoclonal antibody. Positive WB detected in Colo320 cells, HEK-293 cells, HeLa cells, human brain tissue. Positive IHC detected in human heart tissue. Positive IF detected in HeLa cells. Observed molecular weight by Western-blot: 90kD,110kD

Preparation

This antibody was obtained by immunization of EPLIN recombinant protein (Accession Number: BC001247). Purification method: Protein G purified.

Formulation

PBS with 0.02% sodium azide and 50% glycerol pH 7.3.

Storage

Store at -20°C. DO NOT ALIQUOT

Clonality

Monoclonal

Ig Type

Mouse IgG1

Applications

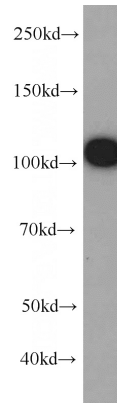
ELISA, WB, IF, IHC

Dilutions

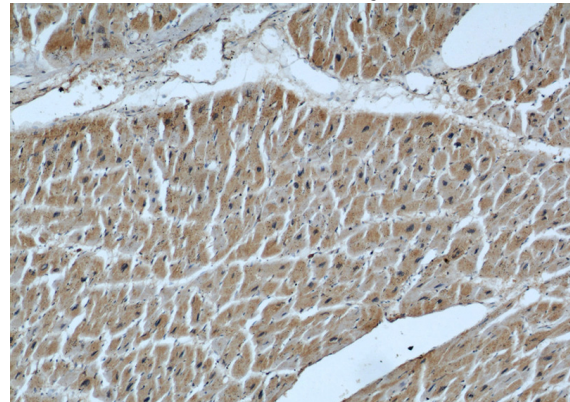
Recommended Dilution:

WB: 1:500-1:5000

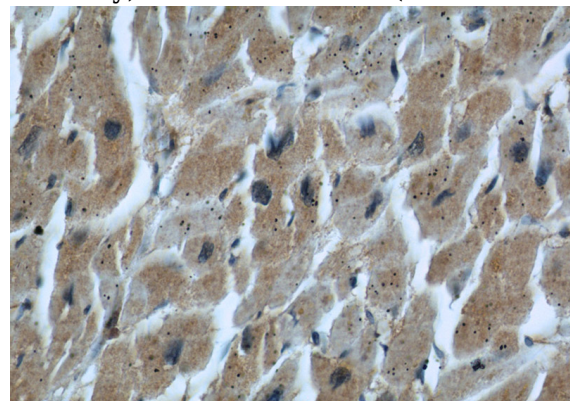
Validations



COLO 320 cells were subjected to SDS PAGE followed by western blot with Catalog No:107191(LIMA1 antibody) at dilution of 1:1000



Immunohistochemical of paraffin-embedded human heart using Catalog No:107191(LIMA1 antibody) at dilution of 1:50 (under 10x lens)

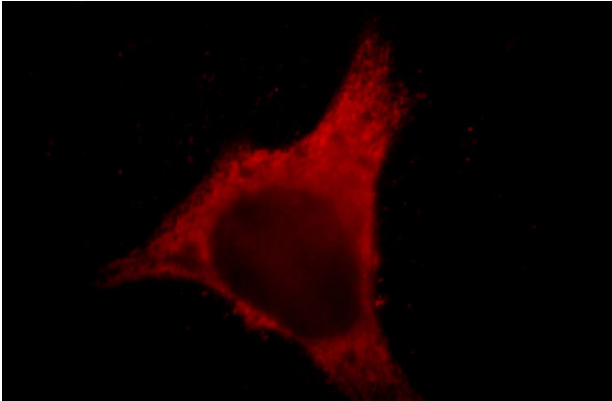


Immunohistochemical of paraffin-embedded human heart using Catalog No:107191(LIMA1 antibody) at dilution of 1:50 (under 10x lens)

EPLIN antibody

Catalog Number: 107191

antibody) at dilution of 1:50 (under 40x lens)



Immunofluorescent analysis of HeLa cells, using LIMA1 antibody Catalog No: at 1:50 dilution and Rhodamine-labeled goat anti-mouse IgG (red).