

# CTAG1A Polyclonal Antibody



Catalog Number: 164191

## Product name

CTAG1A Polyclonal Antibody

## Specificity

Human

## Antibody description

Polyclonal antibody to CTAG1A

## Preparation

Antigen: A synthetic peptide of human CTAG1A

## Formulation

PBS with 0.02% sodium azide, pH7.3.

## Storage

Store at 4°C. Avoid freeze / thaw cycles.

## Clonality

Polyclonal

## Ig Type

Rabbit IgG

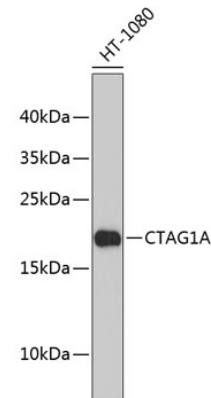
## Applications

WB

## Dilutions

WB 1:500 - 1:1000

## Validations



Western blot - CTAG1A Polyclonal Antibody

Western blot analysis of extracts of HT-1080 cells, using CTAG1A antibody. Secondary antibody: HRP Goat Anti-Rabbit IgG (H+L) at 1:10000 dilution. Lysates/proteins: 25ug per lane. Blocking buffer: 3% nonfat dry milk in TBST.