

Mouse CXCL1 recombinant protein



Catalog Number: 501191

General Information

Protein Construction

A DNA sequence encoding the mouse Cxcl1 (NP_032202.1) (Arg20-Lys96) was expressed.

Organism

Mouse

Expression Host

E. coli

QC Testing

Purity

> 90 % as determined by SDS-PAGE.

Endotoxin

Please contact us for more information.

Stability

Samples are stable for up to twelve months from date of receipt at -70°C

Predicted N terminal

Arg 20

Molecular Mass

The recombinant mouse Cxcl1 consists 77 amino acids and predicts a molecular mass of 8.3 kDa.

Formulation

Lyophilized from sterile 20 mM Tris, 500 mM NaCl, pH 8.0.

1. 5 % trehalose and mannitol are added as protectants before lyophilization.

2. Please contact us for any concerns or special requirements.

Usage Guide

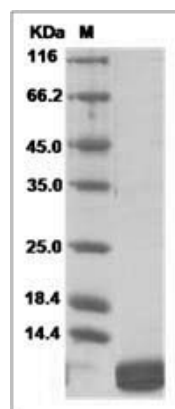
Storage

Store it under sterile conditions at -20°C to -80°C. It is recommended that the protein be aliquoted for optimal storage. Avoid repeated freeze-thaw cycles.

Reconstitution

Adding sterile water, prepare a stock solution of 0.25 mg/ml. Concentration is measured by UV-Vis.

SDS-PAGE



Mouse CXCL1 / MGSA / NAP-3 Protein SDS-PAGE