

DEPDC6 antibody



Catalog Number: 109891

Product name

DEPDC6 antibody

Specificity

Human; other species not tested.

Antibody description

DEPDC6 Rabbit Polyclonal antibody. Positive IHC detected in human thyroid cancer tissue. Positive WB detected in HeLa cells, COLO 320 cells, HT-1080 cells. Observed molecular weight by Western-blot: 55 kDa

Preparation

This antibody was obtained by immunization of DEPDC6 recombinant protein (Accession Number: NM_022783). Purification method: Antigen affinity purified.

Formulation

PBS with 0.1% sodium azide and 50% glycerol pH 7.3.

Storage

Store at -20°C. DO NOT ALIQUOT

Clonality

Polyclonal

Ig Type

Rabbit IgG

Applications

ELISA, WB, IHC

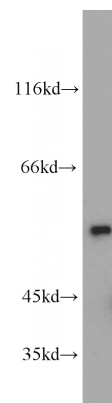
Dilutions

Recommended Dilution:

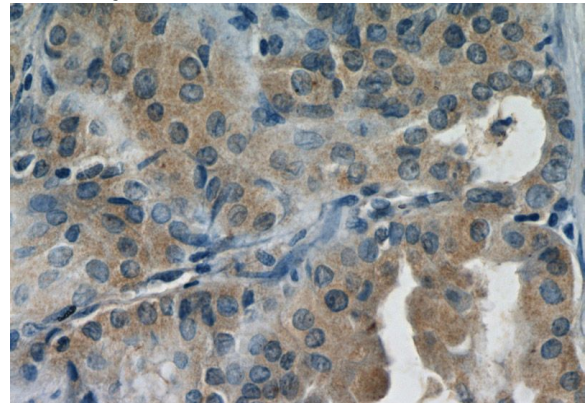
WB: 1:200-1:2000

IHC: 1:20-1:200

Validations



HeLa cells were subjected to SDS PAGE followed by western blot with Catalog No:109891(DEPDC6 antibody) at dilution of 1:500



Immunohistochemistry of paraffin-embedded human thyroid cancer slide using Catalog No:109891(DEPDC6 Antibody) at dilution of 1:50