

# SOCS6 antibody

Catalog Number: 115491

## Product name

SOCS6 antibody

## Specificity

Human, Mouse, Rat; other species not tested.

## Antibody description

SOCS6 Rabbit Polyclonal antibody. Positive IHC detected in human colon cancer tissue. Positive WB detected in HEK-293 cells, mouse lung tissue, mouse spleen tissue. Observed molecular weight by Western-blot: 60kd

## Preparation

This antibody was obtained by immunization of S°CS6 recombinant protein (Accession Number: XM\_047437938). Purification method: Antigen affinity purified.

## Formulation

PBS with 0.02% sodium azide and 50% glycerol pH 7.3.

## Storage

Store at -20°C. DO NOT ALIQUOT

## Clonality

Polyclonal

## Ig Type

Rabbit IgG

## Applications

ELISA, WB, IHC

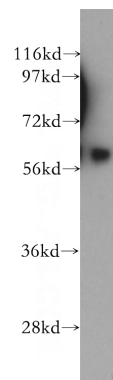
## Dilutions

Recommended Dilution:

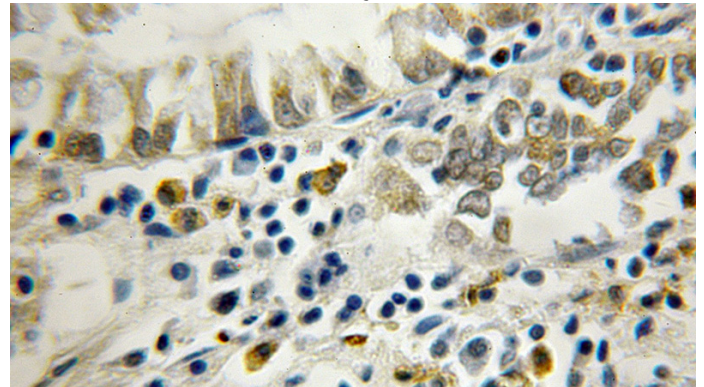
WB: 1:500-1:5000

IHC: 1:20-1:200

## Validations



HEK-293 cells were subjected to SDS PAGE followed by western blot with Catalog No:115491(SocS6 antibody) at dilution of 1:500



Immunohistochemical of paraffin-embedded human colon cancer using Catalog No:115491(SocS6 antibody) at dilution of 1:50 (under 10x lens)