

# RABAC1 antibody

Catalog Number: 114491

## Product name

RABAC1 antibody

## Specificity

Human, Mouse, Rat; other species not tested.

## Antibody description

RABAC1 Rabbit Polyclonal antibody. Positive IHC detected in human pancreas cancer tissue. Positive WB detected in HEK-293 cells, human pancreas tissue. Observed molecular weight by Western-blot: 21 kDa

## Preparation

This antibody was obtained by immunization of RABAC1 recombinant protein (Accession Number: NM\_006423). Purification method: Antigen affinity purified.

## Formulation

PBS with 0.1% sodium azide and 50% glycerol pH 7.3.

## Storage

Store at -20°C. DO NOT ALIQUOT

## Clonality

Polyclonal

## Ig Type

Rabbit IgG

## Applications

ELISA, IHC, WB

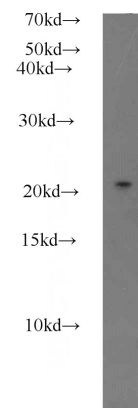
## Dilutions

Recommended Dilution:

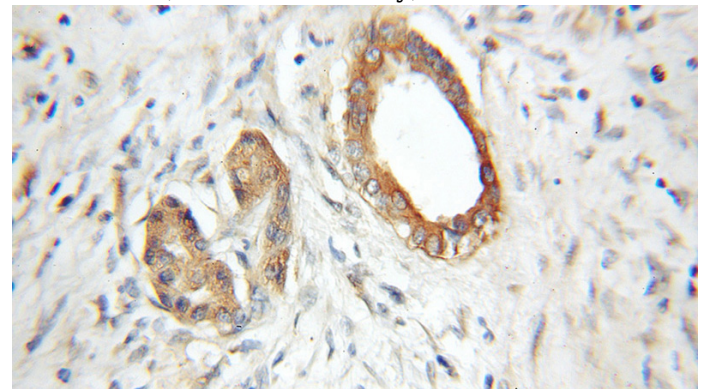
WB: 1:200-1:2000

IHC: 1:20-1:200

## Validations



HEK-293 cells were subjected to SDS PAGE followed by western blot with Catalog No:114491(RABAC1 antibody) at dilution of 1:500



Immunohistochemical of paraffin-embedded human pancreas cancer using Catalog No:114491(RABAC1 antibody) at dilution of 1:50 (under 10x lens)