

# Anti-PBEF / Visfatin / NAMPT antibody



Catalog Number: 100491

## Product name

Anti-PBEF / Visfatin / NAMPT antibody

## Immunogen

[Human PBEF / Visfatin / NAMPT \(His & GST Tag\) recombinant protein](#)

## Specificity

Human NAMPT / PBEF

## Antibody description

Rabbit polyclonal to PBEF / Visfatin / NAMPT

## Preparation

Produced in rabbits immunized with purified, recombinant Human NAMPT / PBEF (rh NAMPT / PBEF; P43490; Met1-His491). NAMPT / PBEF specific IgG was purified by Human NAMPT / PBEF affinity chromatography.

## Formulation

0.2 µm filtered solution in PBS with 5% trehalose

## Storage

This antibody can be stored at 2°C-8°C for one month without detectable loss of activity. Antibody products are stable for twelve months from date of receipt when stored at -20°C to -80°C.

Preservative-Free.

Sodium azide is recommended to avoid contamination (final concentration 0.05%-0.1%). It is toxic to cells and should be disposed of properly. Avoid repeated freeze-thaw cycles.

## Clonality

Polyclonal

## Ig Type

Rabbit IgG

## Applications

ELISA, WB, IHC-P, IP

## Dilutions

WB: 5-10 µg/ml

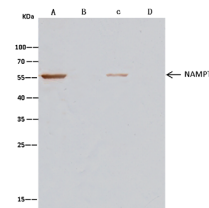
ELISA: 0.1-0.2 µg/mL

This antibody can be used at 0.1-0.2 µg/mL with the appropriate secondary reagents to detect Human NAMPT / PBEF. The detection limit for Human NAMPT / PBEF is approximately 0.00975 ng/well.

IHC-P: 0.1-2 µg/mL

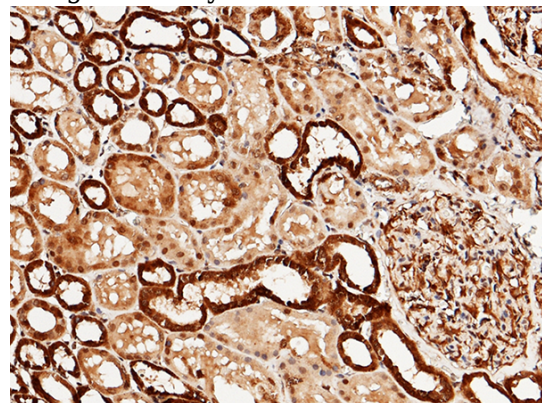
IP: 1-4 µg/mg of lysate

## Validations



Items	Lanes	A	B	C	D
Sample (whole cell lysate)		Jurkat		Raji	
Sample quantity		0.5 mg			
IP antibody type		HG3C-NAMPT-RP02	Rabbit Blank IgG	HG3C-NAMPT-RP02	Rabbit Blank IgG
IP antibody quantity		2 µg			
Protein G agarose		15 µl of 50% Protein G Agarose			
Gel		13% SDS-PAGE reducing gel			
Primary antibody		HG3C-NAMPT antibody at 10 µg/ml [Cat# 10990-RP02]			
Secondary antibody		Clean-Blot® IP Detection Reagent (HRP) at 1:1000 dilution.			

PBEF / Visfatin / NAMPT Antibody, Rabbit PAb, Antigen Affinity Purified



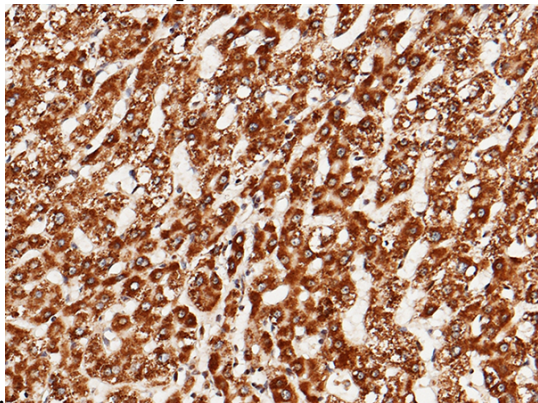
PBEF / Visfatin / NAMPT Antibody, Rabbit PAb, Antigen Affinity Purified, Immunohistochemistry

# Anti-PBEF / Visfatin / NAMPT antibody



Catalog Number: 100491

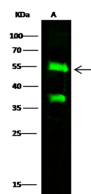
Immunochemical staining of human NAMPT in human kidney with rabbit polyclonal antibody (1  $\mu\text{g}/\text{mL}$ , formalin-fixed paraffin embedded



sections).

PBEF / Visfatin / NAMPT Antibody, Rabbit PAb, Antigen Affinity Purified, Immunohistochemistry

Immunochemical staining of human NAMPT in human liver with rabbit polyclonal antibody (1  $\mu\text{g}/\text{mL}$ , formalin-fixed paraffin embedded



Items	Lanes
Sample (whole cell lysate)	A Jurkat
Sample Volume ( $\mu\text{g}/\text{lane}$ )	30
Cell	13% SDS-PAGE reducing gel
Recommended Concentration	5-10 $\mu\text{g}/\text{ml}$
Secondary Antibody	Dylight 800 labeled Antibody To Rabbit IgG (H+L), at 1:5000 dilution.

sections).

PBEF / Visfatin / NAMPT Antibody, Rabbit PAb, Antigen Affinity Purified, Western blot