

# 14-3-3 sigma antibody

Catalog Number: 107091

## Product name

14-3-3 sigma antibody

IHC: 1:20-1:200

IF: 1:20-1:200

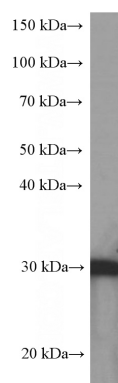
## Specificity

Human; other species not tested.

## Validations

## Antibody description

14-3-3 sigma Mouse Monoclonal antibody. Positive WB detected in MCF-7 cells, A431 cells, HeLa cells. Positive IF detected in MCF-7 cells. Positive IHC detected in human skin tissue, human breast hyperplasia tissue. Observed molecular weight by Western-blot: 28-30 kDa



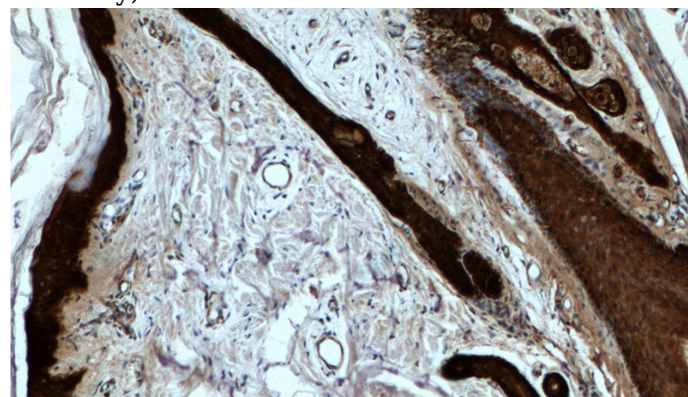
## Preparation

This antibody was obtained by immunization of 14-3-3 sigma recombinant protein (Accession Number: NM\_006142). Purification method: Protein G purified.

MCF-7 cells were subjected to SDS PAGE followed by western blot with Catalog No:107551(SFN Antibody) at dilution of 1:2000

## Formulation

PBS with 0.02% sodium azide and 50% glycerol pH 7.3.



## Storage

Store at -20°C. DO NOT ALIQUOT

## Clonality

Monoclonal

Immunohistochemistry of paraffin-embedded human skin tissue slide using Catalog No:107551(SFN Antibody) at dilution of 1:2000 (under 10x lens).

## Ig Type

Mouse IgG1

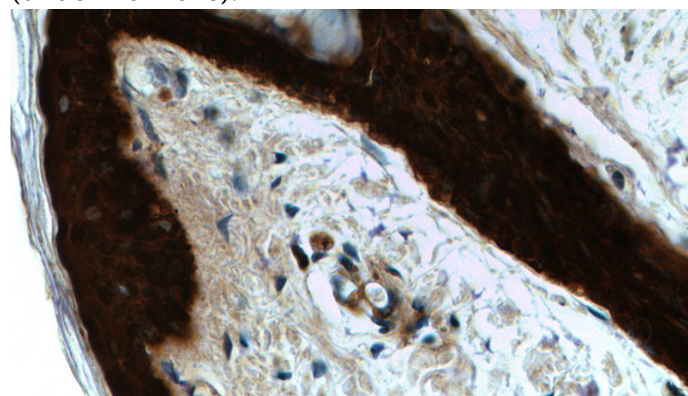
## Applications

ELISA, IHC, WB, IF

## Dilutions

Recommended Dilution:

WB: 1:1000-1:10000



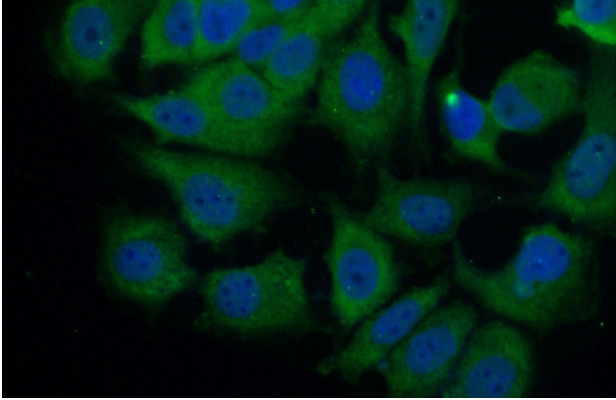
Immunohistochemistry of paraffin-embedded

## 14-3-3 sigma antibody

Catalog Number: 107091

---

human skin tissue slide using Catalog No:107551(SFN Antibody) at dilution of 1:2000 (under 40x lens).



Immunofluorescent analysis of MCF-7 cells using Catalog No:107551(SFN Antibody) at dilution of 1:100 and Alexa Fluor 488-conjugated AffiniPure Goat Anti-Mouse IgG(H+L)