

Anti-phospho-Smad2/3 (Thr8) Rabbit antibody



Catalog Number: 167091

Product name

Anti-phospho-Smad2/3 (Thr8) Rabbit antibody

Specificity

Human, Mouse, Rat

Antibody description

phospho-Smad2/3 (Thr8) Rabbit polyclonal antibody

Preparation

Antigen: The antiserum was produced against synthesized peptide derived from human Smad2/3 around the phosphorylation site of Thr8. AA range:1-50

Formulation

Liquid in PBS containing 50% glycerol, 0.5% BSA and 0.02% sodium azide.

Storage

Store at 4°C short term. Store at -20°C long term. Avoid freeze / thaw cycle.

Clonality

Polyclonal

Ig Type

Rabbit IgG

Applications

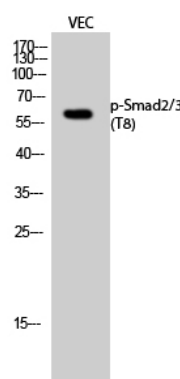
WB, ELISA

Dilutions

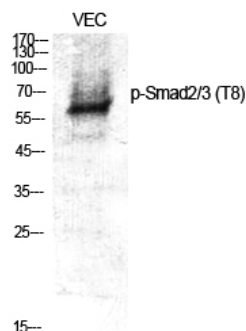
WB: 1/500 - 1/2000

ELISA: 1/10000

Validations



Western Blot analysis of VEC cells using Phospho-Smad2/3 (T8) Polyclonal Antibody



Western Blot analysis of various cells using Phospho-Smad2/3 (T8) Polyclonal Antibody