

## General Information

### Gene Name Synonym

Ubiquitin-like 1-activating enzyme E1A; SUMO-activating enzyme subunit 1, N-terminally processed

### Protein Construction

A DNA sequence encoding the human SAE1 (Q9UBE0) (Met1-Lys346) was expressed and purified.

### Organism

Human

### Expression Host

Baculovirus-Insect Cells

## QC Testing

### Purity

> 95 % as determined by SDS-PAGE

### Endotoxin

< 1.0 EU per  $\mu\text{g}$  of the protein as determined by the LAL method

### Stability

Samples are stable for up to twelve months from date of receipt at  $-70^{\circ}\text{C}$

### Predicted N terminal

Gly

### Molecular Mass

The recombinant human CRIP2 consists of 348 amino acids and predicts a molecular mass of 38.6 KDa. It migrates as an approximately 39 KDa band in SDS-PAGE under reducing conditions.

### Formulation

Lyophilized from sterile 20mM Tris, 500mM NaCl, pH 7.4, 10% glycerol.

1. 5 % trehalose and mannitol are added as protectants before lyophilization.

2. Please contact us for any concerns or special requirements.

## Usage Guide

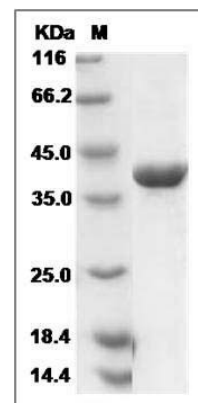
### Storage

Store it under sterile conditions at  $-20^{\circ}\text{C}$  to  $-80^{\circ}\text{C}$ . It is recommended that the protein be aliquoted for optimal storage. Avoid repeated freeze-thaw cycles.

### Reconstitution

Adding sterile water, prepare a stock solution of 0.25 mg/ml. Concentration is measured by UV-Vis.

### SDS-PAGE



Human SAE1 Protein SDS-PAGE