

# XDH Polyclonal Antibody



Catalog Number: 165781

## Product name

XDH Polyclonal Antibody

## Specificity

Human, Mouse

## Antibody description

Polyclonal antibody to XDH

## Preparation

Antigen: A synthetic peptide of human XDH

## Formulation

PBS with 0.02% sodium azide, pH7.3.

## Storage

Store at 4°C. Avoid freeze / thaw cycles.

## Clonality

Polyclonal

## Ig Type

Rabbit IgG

## Applications

WB, IHC, FC

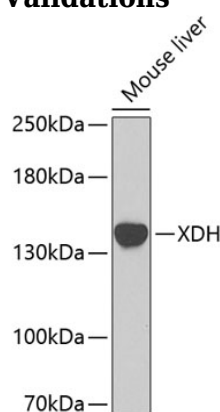
## Dilutions

WB 1:500 - 1:2000

IHC 1:50 - 1:100

FC 1:20 - 1:50

## Validations



Western blot - XDH Polyclonal Antibody

Western blot analysis of extracts of mouse liver, using XDH antibody. Secondary antibody: HRP Goat Anti-Rabbit IgG (H+L) at 1:10000 dilution. Lysates/proteins: 25ug per lane. Blocking buffer: 3% nonfat dry milk in TBST.