

FSD1L antibody

Catalog Number: 110781

Product name

FSD1L antibody

IHC: 1:20-1:200

IF: 1:10-1:100

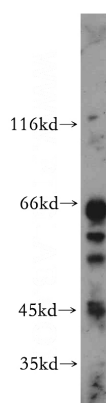
Specificity

Human, Mouse, Rat; other species not tested.

Antibody description

FSD1L Rabbit Polyclonal antibody. Positive IF detected in HepG2 cells, HEK-293 cells, Hela cells. Positive IHC detected in human brain tissue. Positive WB detected in mouse brain tissue, Sp2/0 cells. Observed molecular weight by Western-blot: 56-65 kDa

Validations



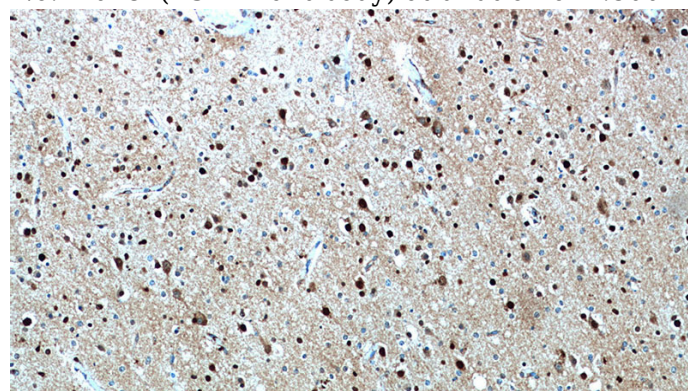
Preparation

This antibody was obtained by immunization of FSD1L recombinant protein (Accession Number: XM_011519081). Purification method: Antigen affinity purified.

mouse brain tissue were subjected to SDS PAGE followed by western blot with Catalog No:110781(FSD1L antibody) at dilution of 1:500

Formulation

PBS with 0.02% sodium azide and 50% glycerol pH 7.3.



Storage

Store at -20°C. DO NOT ALIQUOT

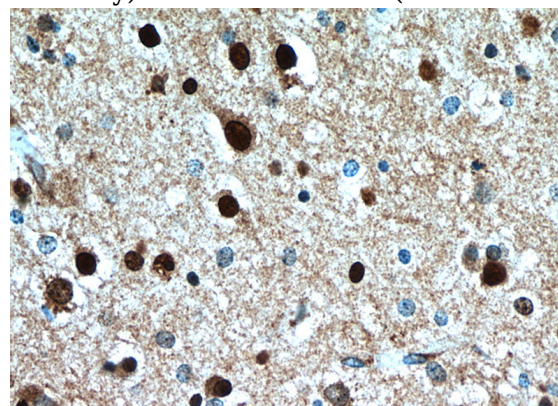
Clonality

Polyclonal

Immunohistochemical of paraffin-embedded human brain using Catalog No:110781(FSD1L antibody) at dilution of 1:50 (under 10x lens)

Ig Type

Rabbit IgG



Applications

ELISA, WB, IHC, IF

Dilutions

Recommended Dilution:

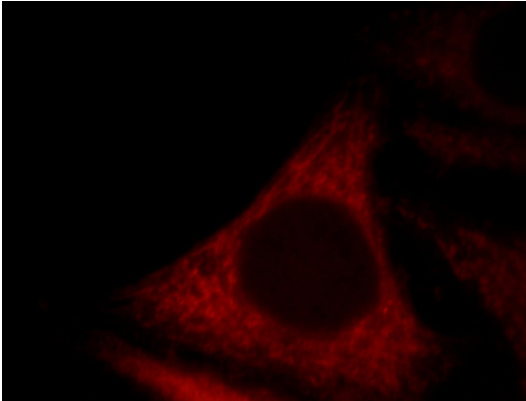
WB: 1:500-1:5000

Immunohistochemical of paraffin-embedded human brain using Catalog No:110781(FSD1L

FSD1L antibody

Catalog Number: 110781

antibody) at dilution of 1:50 (under 40x lens)



Immunofluorescent analysis of HepG2 cells, using FSD1L antibody Catalog No:110781 at 1:25 dilution and Rhodamine-labeled goat anti-rabbit IgG (red).