

# Anti-SQSTM1/p62 Rabbit antibody



Catalog Number: 167381

## Product name

Anti-SQSTM1/p62 Rabbit antibody

IHC: 1/200

ICC/IF: 1/100

## Specificity

Human

FC: 1/20

IP: 1/20

## Antibody description

SQSTM1/p62 Rabbit polyclonal antibody

## Preparation

Antigen: Recombinant protein of human SQSTM1

## Formulation

Supplied in 50nM Tris-Glycine(pH 7.4), 0.15M NaCl, 40%Glycerol, 0.01% sodium azide and 0.05% BSA.

## Storage

Store at -20°C. Stable for 12 months from date of receipt.

## Clonality

Polyclonal

## Ig Type

Rabbit IgG

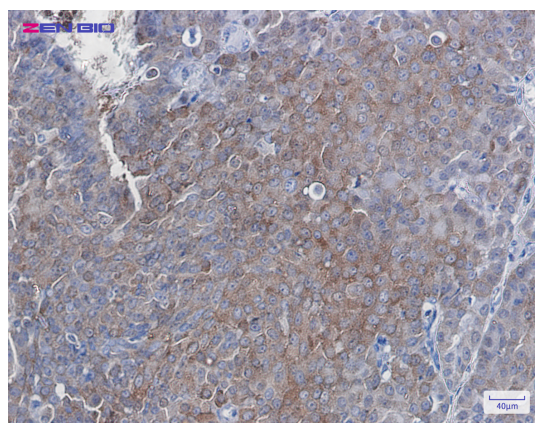
## Applications

WB, IHC-P, ICC/IF, FC, IP

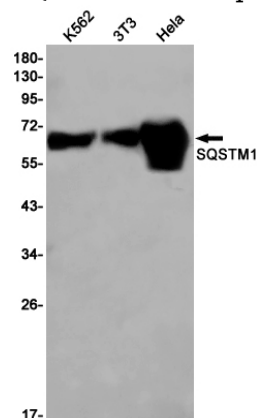
## Dilutions

WB: 1/1000

## Validations



Immunohistochemistry of SQSTM1 in paraffin-embedded Human breast cancer tissue using SQSTM1 Rabbit pAb at dilution 1/50



Western blot detection of SQSTM1 in K562,3T3,HeLa cell lysates using SQSTM1 Rabbit pAb(1:1000 diluted).Predicted band size:48kDa.Observed band size:62kDa.