

General Information

Gene Name Synonym

Brain and testis-specific immunoglobulin superfamily protein; V-set and immunoglobulin domain-containing protein 3

Protein Construction

A DNA sequence encoding the extracellular domain of human IGSF11 (AAH34411.1) (Met 1-Gly 240) was fused with a polyhistidine tag at the C-terminus

Organism

Human

Expression Host

Human Cells

QC Testing

Purity

> 85 % as determined by SDS-PAGE

Endotoxin

< 1.0 EU per μg of the protein as determined by the LAL method

Stability

Samples are stable for up to twelve months from date of receipt at -70°C

Predicted N terminal

Glu 23

Molecular Mass

The secreted recombinant human IGSF11 consists of 229 amino acids and has a predicted molecular mass of 24.6 kDa. In SDS-PAGE under reducing conditions, the apparent molecular mass of the protein is approximately 36 kDa due to glycosylation

Formulation

Lyophilized from sterile PBS, pH 7.4

1. 5 % trehalose and mannitol are added as protectants before lyophilization.

2. Please contact us for any concerns or special requirements.

Usage Guide

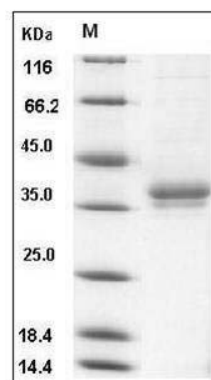
Storage

Store it under sterile conditions at -20°C to -80°C . It is recommended that the protein be aliquoted for optimal storage. Avoid repeated freeze-thaw cycles.

Reconstitution

Adding sterile water, prepare a stock solution of 0.25 mg/ml. Concentration is measured by UV-Vis.

SDS-PAGE



Human IGSF11 / BTIGSF Protein (His Tag) SDS-PAGE