

# CYP17A1 antibody



Catalog Number: 109681

## Product name

CYP17A1 antibody

WB: 1:200-1:2000

IHC: 1:20-1:200

## Specificity

Human; other species not tested.

IF: 1:20-1:200

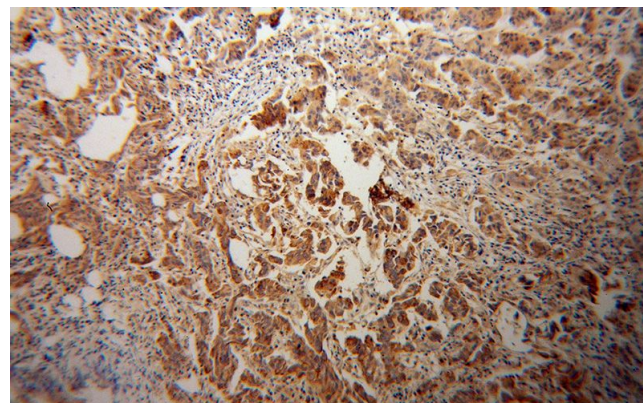
## Antibody description

CYP17A1 Rabbit Polyclonal antibody. Positive WB detected in HeLa cells, A549 cells, HepG2 cells, Jurkat cells, mouse brain tissue, rat brain tissue. Positive IF detected in HepG2 cells. Positive IHC detected in human prostate cancer tissue. Observed molecular weight by Western-blot: 48-51 kDa

## Validations

## Preparation

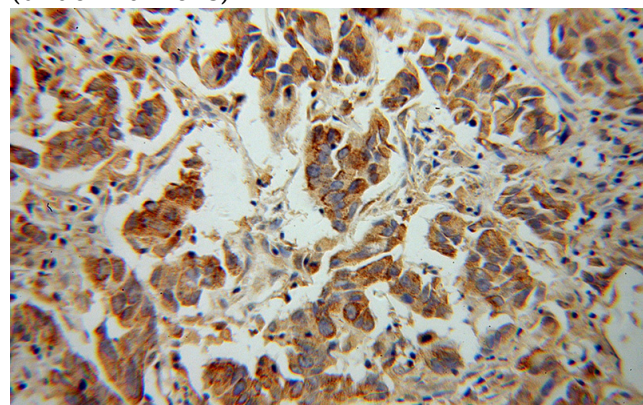
This antibody was obtained by immunization of CYP17A1 recombinant protein (Accession Number: NM\_000102). Purification method: Antigen affinity purified.



Immunohistochemical of paraffin-embedded human prostate cancer using Catalog No:109681(CYP17A1 antibody) at dilution of 1:100 (under 10x lens)

## Formulation

PBS with 0.02% sodium azide and 50% glycerol pH 7.3.



Immunohistochemical of paraffin-embedded human prostate cancer using Catalog No:109681(CYP17A1 antibody) at dilution of 1:100 (under 40x lens)

## Storage

Store at -20°C. DO NOT ALIQUOT

## Clonality

Polyclonal

## Ig Type

Rabbit IgG

## Applications

ELISA, IHC, IF, WB

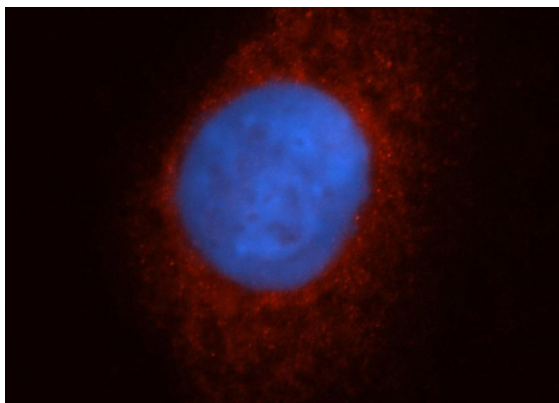
## Dilutions

Recommended Dilution:

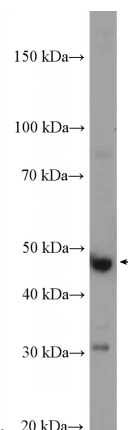
# CYP17A1 antibody



Catalog Number: 109681



Immunofluorescent analysis of HepG2 cells, using CYP17A1 antibody Catalog No:109681 at 1:50 dilution and Rhodamine-labeled goat anti-rabbit IgG (red). Blue pseudocolor = DAPI (fluorescent



HeLa cells were subjected to SDS PAGE followed by western blot with Catalog No:109681(CYP17A1 Antibody) at dilution of 1:600