

# PDI antibody

Catalog Number: 113681

## Product name

PDI antibody

## Specificity

Human, Mouse, Rat; other species not tested.

## Antibody description

PDI Rabbit Polyclonal antibody. Positive IHC detected in human prostate cancer tissue, human lung cancer tissue. Positive IF detected in HEK-293 cells, HepG2 cells. Positive FC detected in HEK-293T cells. Positive IP detected in mouse liver tissue. Positive WB detected in COLO 320 cells, HEK-293 cells, HepG2 cells, human brain tissue, human thyroid gland tissue, mouse heart tissue, mouse thymus tissue, rat brain tissue, rat heart tissue, rat thymus tissue. Observed molecular weight by Western-blot: 57 kDa

## Preparation

This antibody was obtained by immunization of PDI recombinant protein (Accession Number: BC014504). Purification method: Antigen affinity purified.

## Formulation

PBS with 0.1% sodium azide and 50% glycerol pH 7.3.

## Storage

Store at -20°C. DO NOT ALIQUOT

## Clonality

Polyclonal

## Ig Type

Rabbit IgG

## Applications

ELISA, WB, IHC, IF, FC, IP

## Dilutions

Recommended Dilution:

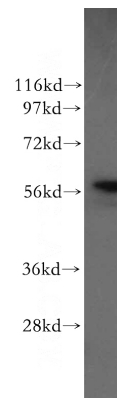
WB: 1:200-1:2000

IP: 1:200-1:1000

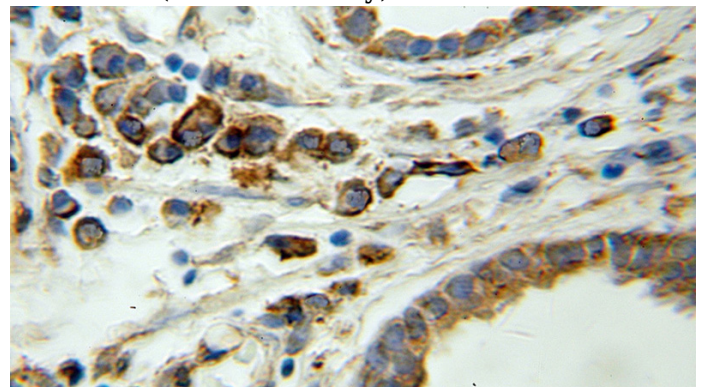
IHC: 1:20-1:200

IF: 1:10-1:100

## Validations



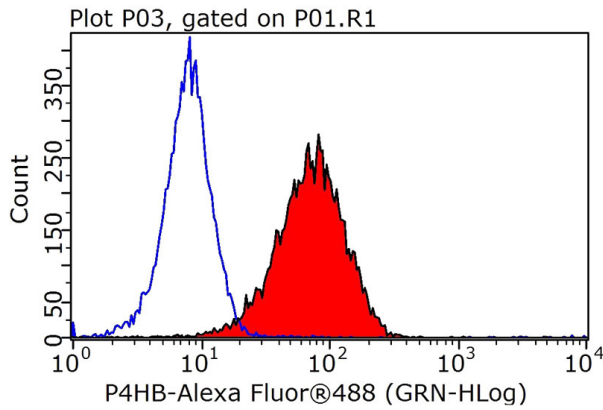
COLO 320 cells were subjected to SDS PAGE followed by western blot with Catalog No:113681(PDIA1 antibody) at dilution of 1:500



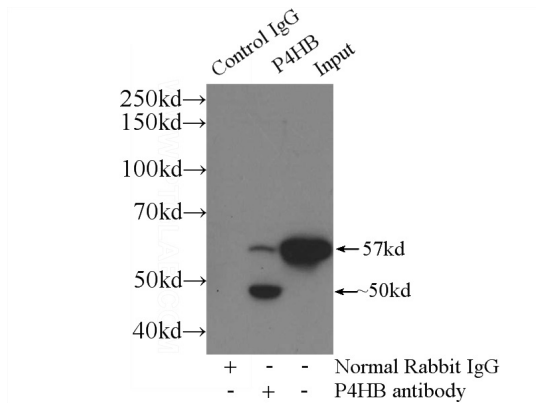
Immunohistochemical of paraffin-embedded human prostate cancer using Catalog No:113681(PDIA1 antibody) at dilution of 1:50 (under 40x lens)

# PDI antibody

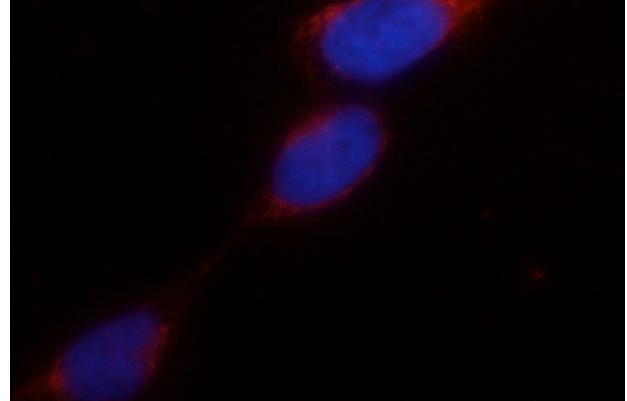
Catalog Number: 113681



1X10<sup>6</sup> HEK-293T cells were stained with .2ug PDI antibody (Catalog No:113681, red) and control antibody (blue). Fixed with 90% MeOH blocked with 3% BSA (30 min). Alexa Fluor 488-conjugated AffiniPure Goat Anti-Rabbit IgG(H+L) with dilution 1:1000.



IP Result of anti-PDI (IP:Catalog No:113681, 3ug; Detection:Catalog No:113681 1:300) with mouse liver tissue lysate 4000ug.



Immunofluorescent analysis of HEK-293 cells using Catalog No:113681(PDI Antibody) at dilution of 1:25 and Rhodamine-Goat anti-Rabbit IgG