

# IGF2BP3 antibody



Catalog Number: 111681

## Product name

IGF2BP3 antibody

## Immunogen

[Human IGF2BP3 Recombinant protein \(GST tag\)](#)

## Specificity

Human, Mouse; other species not tested.

## Antibody description

IGF2BP3 Rabbit Polyclonal antibody. Positive IF detected in MCF-7 cells. Positive IHC detected in human pancreas cancer tissue. Positive WB detected in HepG2 cells, BxPC-3 cells, HeLa cells, mouse brain tissue. Positive IP detected in HeLa cells. Observed molecular weight by Western-blot: 64 kDa

## Preparation

This antibody was obtained by immunization of IGF2BP3 recombinant protein (Accession Number: NM\_006547). Purification method: Antigen affinity purified.

## Formulation

PBS with 0.02% sodium azide and 50% glycerol pH 7.3.

## Storage

Store at -20°C. DO NOT ALIQUOT

## Clonality

Polyclonal

## Ig Type

Rabbit IgG

## Applications

ELISA, WB, IHC, IF, IP

## Dilutions

Recommended Dilution:

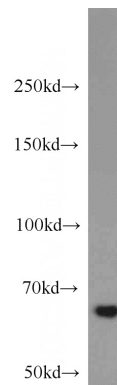
WB: 1:500-1:5000

IP: 1:500-1:5000

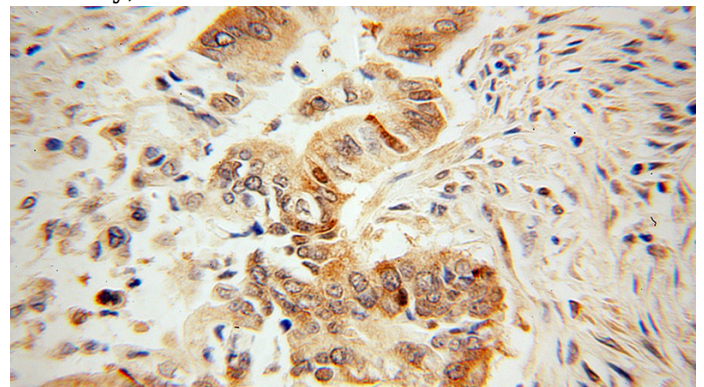
IHC: 1:20-1:200

IF: 1:10-1:100

## Validations



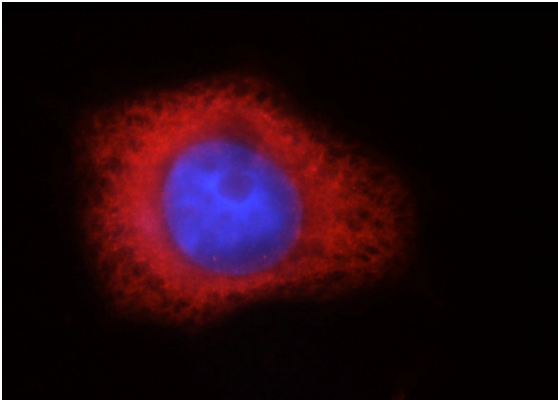
HepG2 cells were subjected to SDS PAGE followed by western blot with Catalog No:111681(IGF2BP3 antibody) at dilution of 1:1000



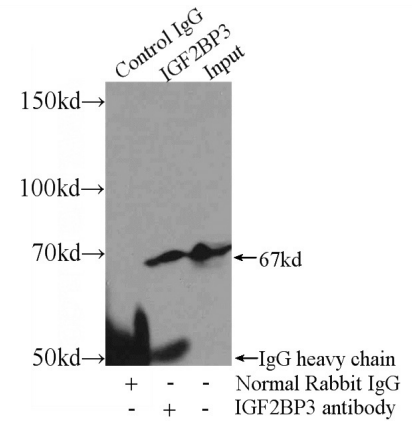
Immunohistochemical of paraffin-embedded human pancreas cancer using Catalog No:111681(IGF2BP3 antibody) at dilution of 1:100 (under 40x lens)

# IGF2BP3 antibody

Catalog Number: 111681



Immunofluorescent analysis of MCF-7 cells, using IGF2BP3 antibody Catalog No:111681 at 1:25 dilution and Rhodamine-labeled goat anti-rabbit IgG (red). Blue pseudocolor = DAPI (fluorescent



DNA dye).

IP Result of anti-IGF2BP3 (IP:Catalog No:111681, 3ug; Detection:Catalog No:111681 1:1000) with HeLa cells lysate 4400ug.