

# ATE1 antibody



Catalog Number: 108281

## Product name

ATE1 antibody

## Specificity

human, mouse, rat; other species not tested.

## Antibody description

ATE1 Rabbit Polyclonal antibody. Positive WB detected in Jurkat cells, mouse liver tissue. Observed molecular weight by Western-blot: 59-65kd

## Preparation

This antibody was obtained by immunization of ATE1 recombinant protein (Accession Number: NM\_007041). Purification method: Antigen affinity purified.

## Formulation

PBS with 0.02% sodium azide and 50% glycerol pH 7.3.

## Storage

Store at -20°C. DO NOT ALIQUOT

## Clonality

Polyclonal

## Ig Type

Rabbit IgG

## Applications

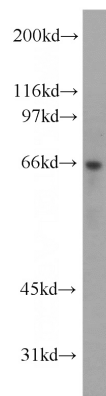
ELISA, WB

## Dilutions

Recommended Dilution:

WB: 1:200-1:2000

## Validations



Jurkat cells were subjected to SDS PAGE followed by western blot with Catalog No:108281(ATE1 antibody) at dilution of 1:1000