

# PRSS8 antibody

Catalog Number: 114281

## Product name

PRSS8 antibody

## Specificity

Human, Mouse, Rat; other species not tested.

## Antibody description

PRSS8 Rabbit Polyclonal antibody. Positive WB detected in human colon tissue, mouse kidney tissue. Positive IHC detected in human prostate cancer tissue, human ovary tumor tissue. Observed molecular weight by Western-blot: 39 kDa

## Preparation

This antibody was obtained by immunization of PRSS8 recombinant protein (Accession Number: NM\_002773). Purification method: Antigen affinity purified.

## Formulation

PBS with 0.02% sodium azide and 50% glycerol pH 7.3.

## Storage

Store at -20°C. DO NOT ALIQUOT

## Clonality

Polyclonal

## Ig Type

Rabbit IgG

## Applications

ELISA, WB, IHC

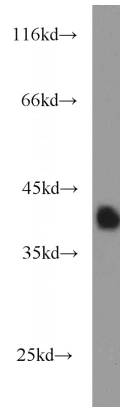
## Dilutions

Recommended Dilution:

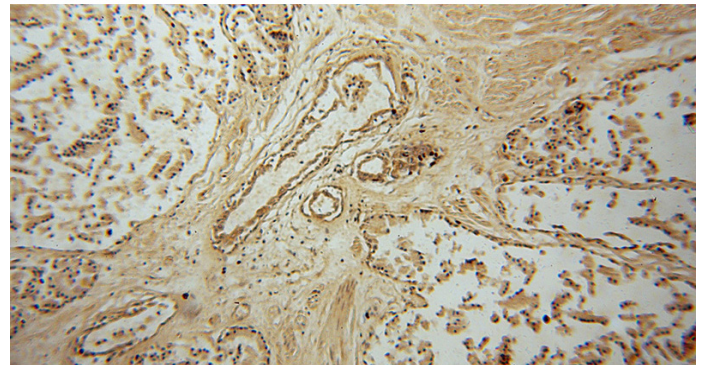
WB: 1:200-1:2000

IHC: 1:20-1:200

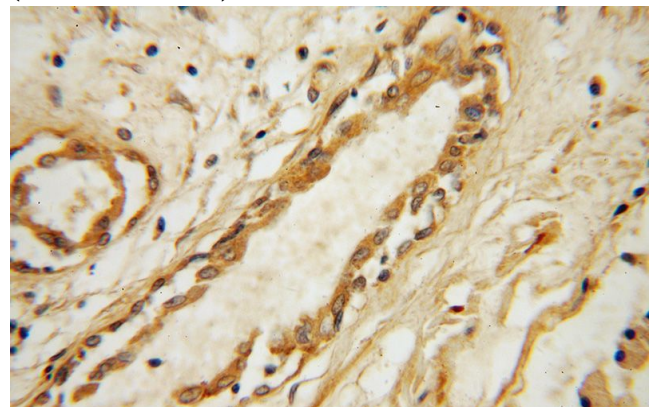
## Validations



human colon tissue were subjected to SDS PAGE followed by western blot with Catalog No:114281 (PRSS8 antibody) at dilution of 1:500



Immunohistochemical of paraffin-embedded human prostate cancer using Catalog No:114281 (PRSS8 antibody) at dilution of 1:50 (under 10x lens)



Immunohistochemical of paraffin-embedded human prostate cancer using Catalog No:114281 (PRSS8 antibody) at dilution of 1:50

# PRSS8 antibody



Catalog Number: 114281

---

(under 40x lens)