

Human Carboxypeptidase A2/CPA2 (His Tag) recombinant protein



Catalog Number: 503281

General Information

Protein Construction

A DNA sequence encoding the pre pro form of human CPA2 (NP_001859.1) (Met 1-Tyr 417) was expressed with a C-terminal polyhistidine tag.

Organism

Human

Expression Host

Human Cells

QC Testing

Activity

Measured by its ability to cleave a colorimetric peptide substrate, N-acetyl-Phe-Thiaphenol (N-Ac-PSP, Peptide International's Catalog# STP-3621-PI), in the presence of 5,5'-Dithio-bis (2-nitrobenzoic acid) (DTNB), as measured using the wavelength at 405 nm and the extinction coefficient of 13,260 M⁻¹ cm⁻¹. The specific activity is >4,000 pmoles/min/μg.

Purity

> 90 % as determined by SDS-PAGE

Endotoxin

< 1.0 EU per μg of the protein as determined by the LAL method

Stability

Samples are stable for up to twelve months from date of receipt at -70°C

Predicted N terminal

Leu 17

Molecular Mass

The secreted recombinant human CPA2 existing as the proform consists of 412 amino acids and has a predicted molecular mass of 46 kDa also as estimated by SDS-PAGE under reducing conditions.

Formulation

Lyophilized from sterile 25mM Tris, 0.15mM NaCl, pH 7.4

1. 5 % trehalose and mannitol are added as protectants before lyophilization.

2. Please contact us for any concerns or special requirements.

Usage Guide

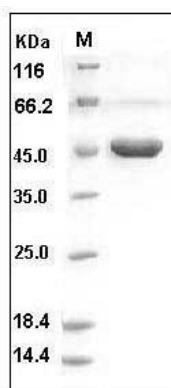
Storage

Store it under sterile conditions at -20°C to -80°C. It is recommended that the protein be aliquoted for optimal storage. Avoid repeated freeze-thaw cycles.

Reconstitution

Adding sterile water, prepare a stock solution of 0.25 mg/ml. Concentration is measured by UV-Vis.

SDS-PAGE



Human Carboxypeptidase A2 / CPA2 Protein (His Tag) SDS-PAGE