

# LMF2 antibody

Catalog Number: 112281

## Product name

LMF2 antibody

IHC: 1:20-1:200

IF: 1:10-1:100

## Specificity

Human, Mouse, Rat; other species not tested.

## Antibody description

LMF2 Rabbit Polyclonal antibody. Positive WB detected in HeLa cells, human brain tissue. Positive IHC detected in human kidney tissue. Positive IF detected in MCF-7 cells. Observed molecular weight by Western-blot: 80kd

## Preparation

This antibody was obtained by immunization of LMF2 recombinant protein (Accession Number: NM\_001363816). Purification method: Antigen affinity purified.

## Formulation

PBS with 0.02% sodium azide and 50% glycerol pH 7.3.

## Storage

Store at -20°C. DO NOT ALIQUOT

## Clonality

Polyclonal

## Ig Type

Rabbit IgG

## Applications

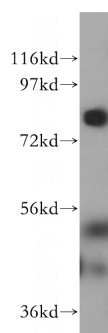
ELISA, WB, IHC, IF

## Dilutions

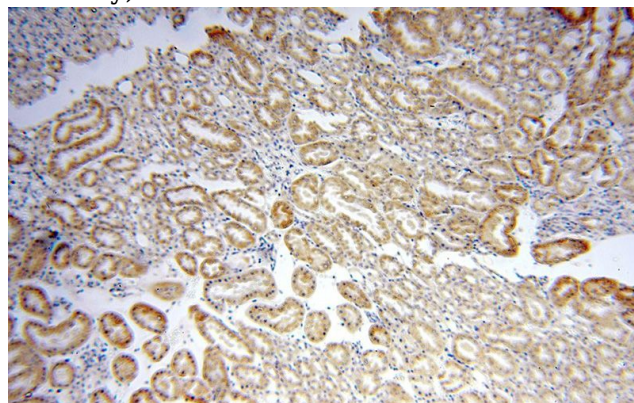
Recommended Dilution:

WB: 1:1000-1:10000

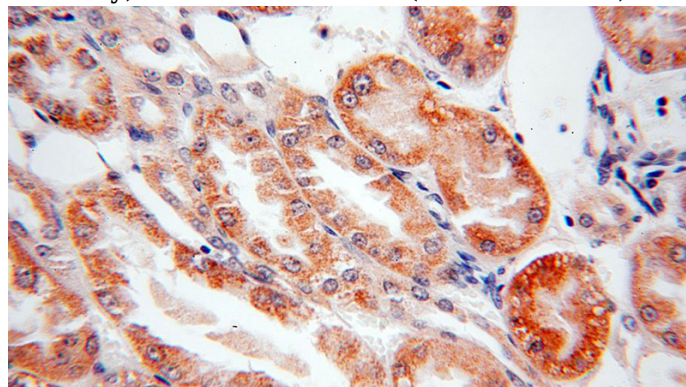
## Validations



HeLa cells were subjected to SDS PAGE followed by western blot with Catalog No:112281(LMF2 antibody) at dilution of 1:800



Immunohistochemical of paraffin-embedded human kidney using Catalog No:112281(LMF2 antibody) at dilution of 1:100 (under 10x lens)



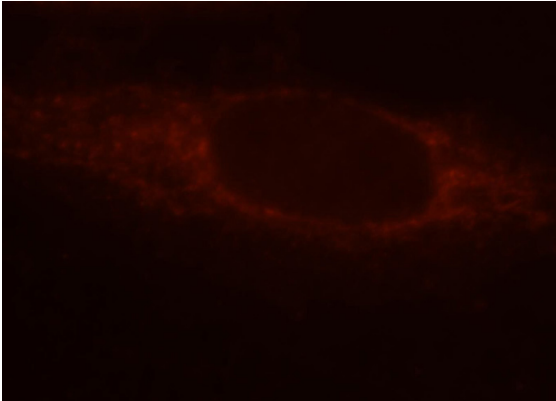
Immunohistochemical of paraffin-embedded human kidney using Catalog No:112281(LMF2 antibody) at dilution of 1:100 (under 10x lens)

# LMF2 antibody

Catalog Number: 112281

---

antibody) at dilution of 1:100 (under 40x lens)



Immunofluorescent analysis of MCF-7 cells, using Catalog No:112281 and Rhodamine-labeled goat anti-rabbit IgG (red).