

Anti-p42 MAPK (ERK2) Rabbit antibody



Catalog Number: 168981

Product name

Anti-p42 MAPK (ERK2) Rabbit antibody

Applications

WB, IHC-P, ICC/IF, FC, IP

Specificity

Human, Mouse, Rat

Dilutions

1:1000

Antibody description

p42 MAPK (ERK2) Rabbit monoclonal antibody

1:20

1:50

Preparation

Antigen: A synthetic peptide of human ERK2

1:100

1:20

Formulation

Supplied in 50nM Tris-Glycine(pH 7.4), 0.15M NaCl, 40%Glycerol, 0.01% sodium azide and 0.05% BSA.

Validations

Storage

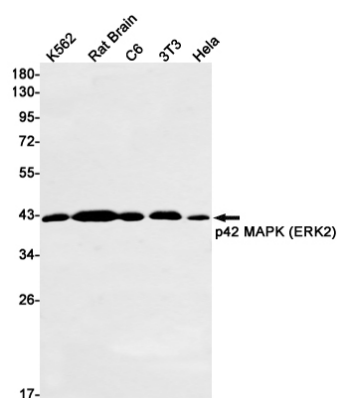
Store at 4°C short term. Aliquot and store at -20°C long term. Avoid freeze / thaw cycle.

Clonality

Monoclonal

Ig Type

Rabbit IgG



Western blot detection of p42 MAPK (ERK2) in K562,Rat Brain,C6,3T3,Hela cell lysates using p42 MAPK (ERK2) Rabbit mAb(1:1000 diluted).Predicted band size:41kDa.Observed band size:41kDa.