

SPOP antibody

Catalog Number: 115581

Product name

SPOP antibody

IP: 1:200-1:1000

IF: 1:50-1:500

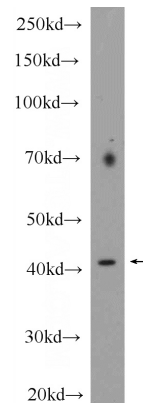
Specificity

Human, Mouse, Rat; other species not tested.

Validations

Antibody description

SPOP Rabbit Polyclonal antibody. Positive IP detected in HeLa cells. Positive WB detected in HeLa cells, HepG2 cells, MCF-7 cells. Positive IF detected in HepG2 cells. Observed molecular weight by Western-blot: 42 kDa



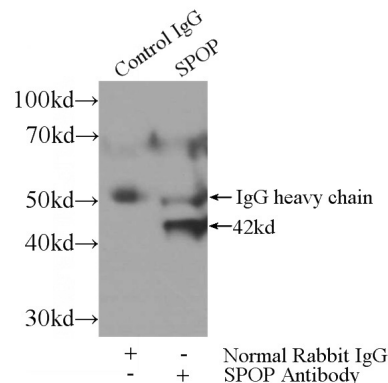
Preparation

This antibody was obtained by immunization of SPOP recombinant protein (Accession Number: XM_005257724). Purification method: Antigen affinity purified.

HeLa cells were subjected to SDS PAGE followed by western blot with Catalog No:115581(SPOP Antibody) at dilution of 1:600

Formulation

PBS with 0.1% sodium azide and 50% glycerol pH 7.3.



Storage

Store at -20°C. DO NOT ALIQUOT

IP Result of anti-SPOP (IP:Catalog No:115581, 3ug; Detection:Catalog No:115581 1:300) with HeLa cells lysate 3200ug.

Clonality

Polyclonal

Ig Type

Rabbit IgG

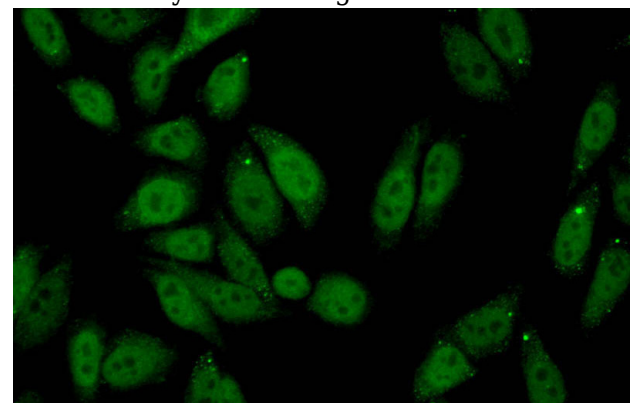
Applications

ELISA, WB, IP, IF

Dilutions

Recommended Dilution:

WB: 1:200-1:2000



Immunofluorescent analysis of (10% Formaldehyde) fixed HepG2 cells using Catalog

SPOP antibody



Catalog Number: 115581

No:115581(SPOP Antibody) at dilution of 1:50 and Alexa Fluor 488-conjugated AffiniPure Goat Anti-Rabbit IgG(H+L)