

# ADAR Polyclonal Antibody



Catalog Number: 165581

## Product name

ADAR Polyclonal Antibody

## Specificity

Human, Mouse, Rat

## Antibody description

Polyclonal antibody to ADAR

## Preparation

Antigen: A synthetic peptide corresponding to a sequence within amino acids 150-250 of human ADAR (NP\_001102.2).

## Formulation

PBS with 0.02% sodium azide, 50% glycerol, pH7.3.

## Storage

Store at -20°C. Avoid freeze / thaw cycles.

## Clonality

Polyclonal

## Ig Type

Rabbit IgG

## Applications

WB, IHC, IF

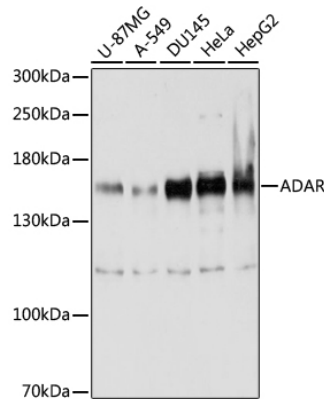
## Dilutions

WB 1:500 - 1:2000

IHC 1:50 - 1:200

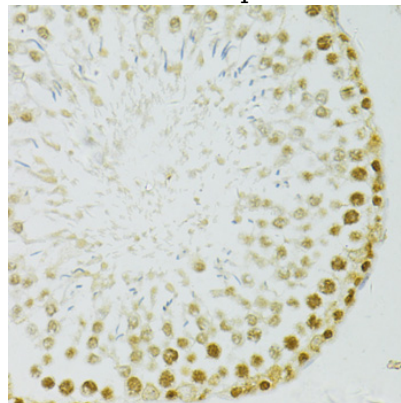
IF 1:50 - 1:200

## Validations



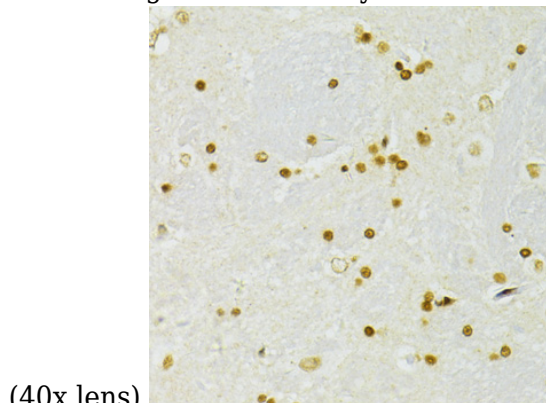
Western blot - ADAR Polyclonal Antibody

Western blot analysis of extracts of various cell lines, using ADAR antibody at 1:1000 dilution. Secondary antibody: HRP Goat Anti-Rabbit IgG (H+L) at 1:10000 dilution. Lysates/proteins: 25ug per lane. Blocking buffer: 3% nonfat dry milk in TBST. Detection: ECL Enhanced Kit. Exposure time: 20s.



Immunohistochemistry - ADAR Polyclonal Antibody

Immunohistochemistry of paraffin-embedded rat testis using ADAR antibody at dilution of 1:100



(40x lens).

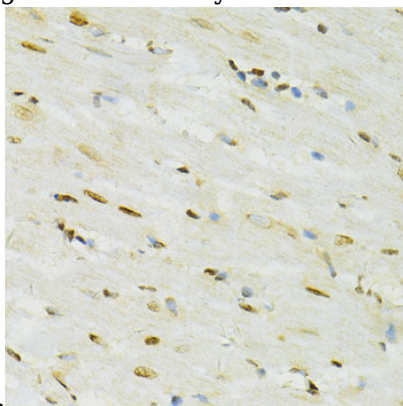
# ADAR Polyclonal Antibody



Catalog Number: 165581

## Immunohistochemistry - ADAR Polyclonal Antibody

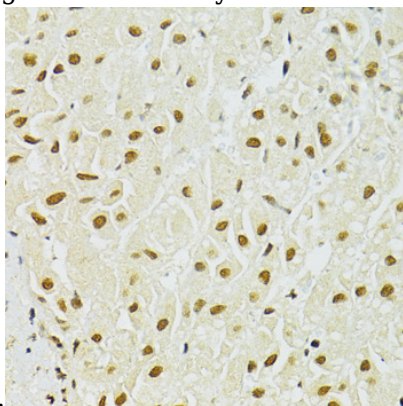
Immunohistochemistry of paraffin-embedded rat brain using ADAR antibody at dilution of 1:100



(40x lens).

## Immunohistochemistry - ADAR Polyclonal Antibody

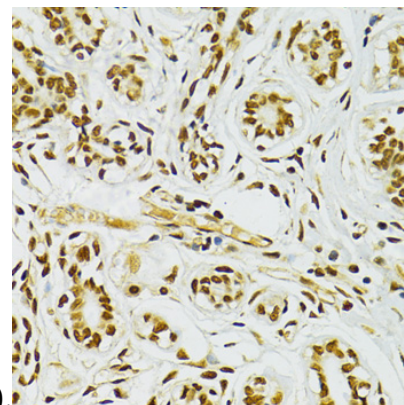
Immunohistochemistry of paraffin-embedded rat heart using ADAR antibody at dilution of 1:100



(40x lens).

## Immunohistochemistry - ADAR Polyclonal Antibody

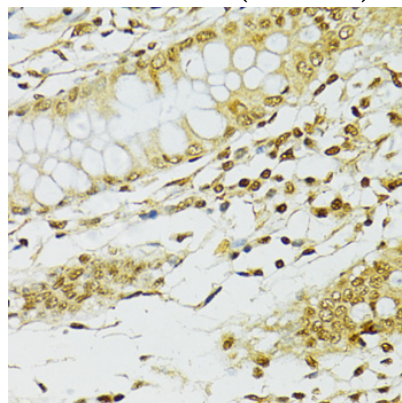
Immunohistochemistry of paraffin-embedded human liver using ADAR antibody at dilution of



1:100 (40x lens).

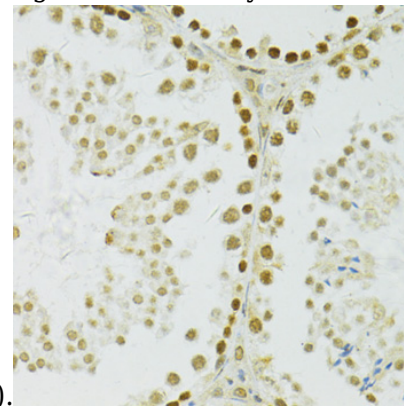
## Immunohistochemistry - ADAR Polyclonal Antibody

Immunohistochemistry of paraffin-embedded human breast cancer using ADAR antibody at dilution of 1:100 (40x lens).



## Immunohistochemistry - ADAR Polyclonal Antibody

Immunohistochemistry of paraffin-embedded human stomach using ADAR antibody at dilution



of 1:100 (40x lens).

## Immunohistochemistry - ADAR Polyclonal Antibody

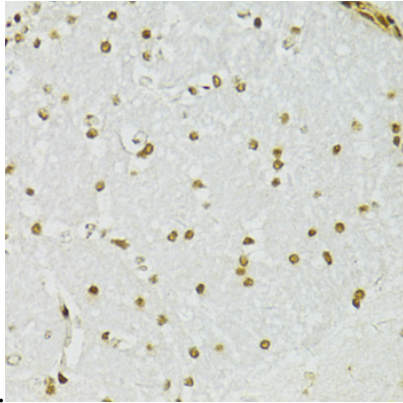
# ADAR Polyclonal Antibody



Catalog Number: 165581

---

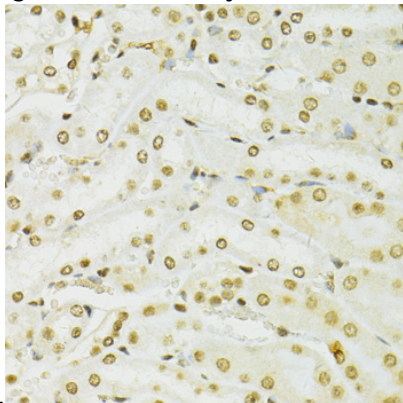
Immunohistochemistry of paraffin-embedded mouse testis using ADAR antibody at dilution of



1:100 (40x lens).

Immunohistochemistry - ADAR Polyclonal Antibody

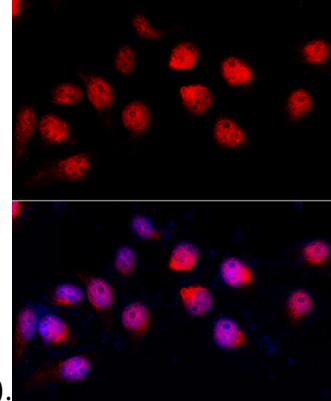
Immunohistochemistry of paraffin-embedded mouse brain using ADAR antibody at dilution of



1:100 (40x lens).

Immunohistochemistry - ADAR Polyclonal Antibody

Immunohistochemistry of paraffin-embedded mouse kidney using ADAR antibody at dilution of



1:100 (40x lens).

Immunofluorescence - ADAR Polyclonal Antibody  
Immunofluorescence analysis of HeLa cells using ADAR antibody at dilution of 1:100 (40x lens).  
Blue: DAPI for nuclear staining.