

# Human MEP1A (His Tag) recombinant protein



Catalog Number: 501581

## General Information

### Gene Name Synonym

Endopeptidase-2; N-benzoyl-L-tyrosyl-P-amino-benzoic acid hydrolase subunit alpha; PABA peptide hydrolase; PPH alpha

### Protein Construction

A DNA sequence encoding the human MEP1A (NP\_005579.2) extracellular domain (Met 1-Gln 601) was expressed, fused with a polyhistidine tag at the C-terminus.

### Organism

Human

### Expression Host

Human Cells

## QC Testing

### Purity

> 90 % as determined by SDS-PAGE

### Endotoxin

< 1.0 EU per  $\mu\text{g}$  of the protein as determined by the LAL method

### Stability

Samples are stable for up to twelve months from date of receipt at  $-70^{\circ}\text{C}$

### Predicted N terminal

Val 22

### Molecular Mass

The secreted recombinant human MEP1A (pro form) consists of 591 amino acids with the predicted molecular mass of 67.7 kDa. As a result of glycosylation, rh MEP1A migrates as an approximately 80 kDa band in SDS-PAGE under reducing conditions.

### Formulation

Lyophilized from sterile PBS, pH 7.4

1. 5 % trehalose and mannitol are added as protectants before lyophilization.

2. Please contact us for any concerns or special requirements.

## Usage Guide

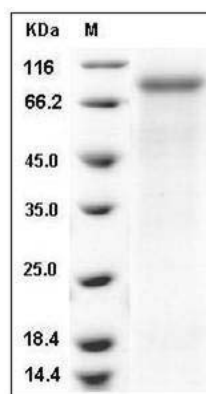
### Storage

Store it under sterile conditions at  $-20^{\circ}\text{C}$  to  $-80^{\circ}\text{C}$ . It is recommended that the protein be aliquoted for optimal storage. Avoid repeated freeze-thaw cycles.

### Reconstitution

Adding sterile water, prepare a stock solution of 0.25 mg/ml. Concentration is measured by UV-Vis.

### SDS-PAGE



Human MEP1A / PPHA Protein (His Tag) SDS-PAGE