

SH2D3A antibody

Catalog Number: 115181

Product name

SH2D3A antibody

Specificity

Human; other species not tested.

Antibody description

SH2D3A Rabbit Polyclonal antibody. Positive WB detected in HeLa cells, HEK-293 cells, HepG2 cells. Positive IF detected in HeLa cells. Observed molecular weight by Western-blot: 64kd

Preparation

This antibody was obtained by immunization of SH2D3A recombinant protein (Accession Number: NM_005490). Purification method: Antigen affinity purified.

Formulation

PBS with 0.02% sodium azide and 50% glycerol pH 7.3.

Storage

Store at -20°C. DO NOT ALIQUOT

Clonality

Polyclonal

Ig Type

Rabbit IgG

Applications

ELISA, WB, IF

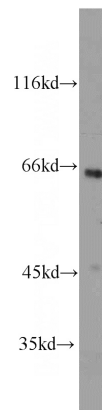
Dilutions

Recommended Dilution:

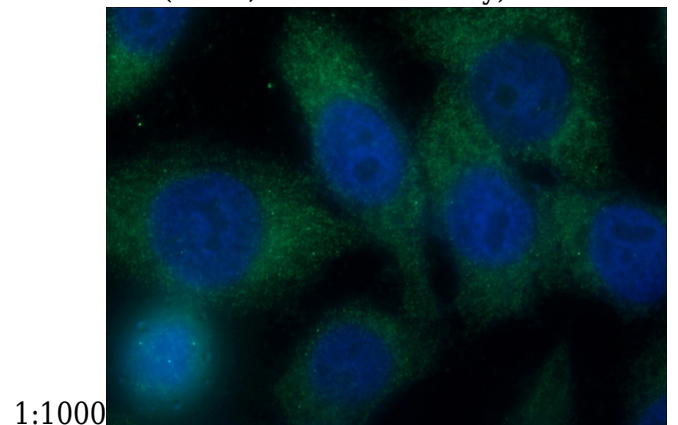
WB: 1:200-1:2000

IF: 1:20-1:200

Validations



HeLa cells were subjected to SDS PAGE followed by western blot with Catalog No:115181(NSP1;SH2D3A antibody) at dilution of



1:1000

Immunofluorescent analysis of HeLa cells using Catalog No:115181(NSP1;SH2D3A Antibody) at dilution of 1:50 and Alexa Fluor 488-conjugated AffiniPure Goat Anti-Rabbit IgG(H+L)