

Anti-Calreticulin (6H1) Mouse antibody



Catalog Number: 168481

Product name

Anti-Calreticulin (6H1) Mouse antibody

Specificity

Human, Mouse

Antibody description

Calreticulin (6H1) Mouse monoclonal antibody

Preparation

Antigen: Synthetic peptide corresponding to aa (EEEDVPGQAKDELG) of human Calreticulin, conjugated to KLH.

Formulation

Ascitic fluid containing 0.03% sodium azide.

Storage

Store at 4°C short term. Store at -20°C long term. Avoid freeze / thaw cycle.

Clonality

Monoclonal

Ig Type

Mouse IgG2a

Applications

WB, IHC-P, ICC/IF

Dilutions

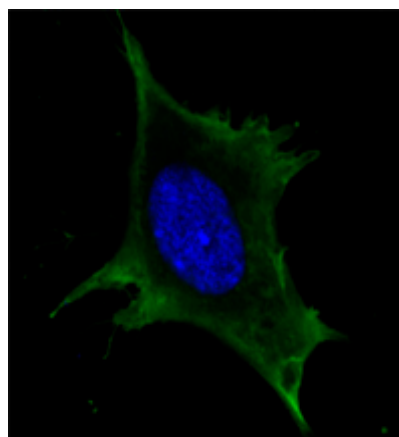
WB: 1/500 - 1/2000

IHC: 1/200 - 1/1000

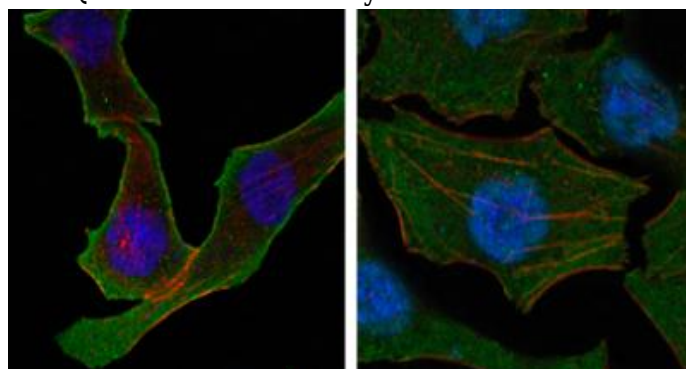
ICC: 1/200 - 1/1000

ELISA: 1/10000

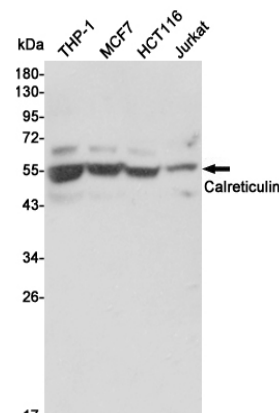
Validations



Confocal immunofluorescence analysis of 3T3-L1 cells using Calreticulin mouse mAb (green). Blue: DRAQ5 fluorescent DNA dye.



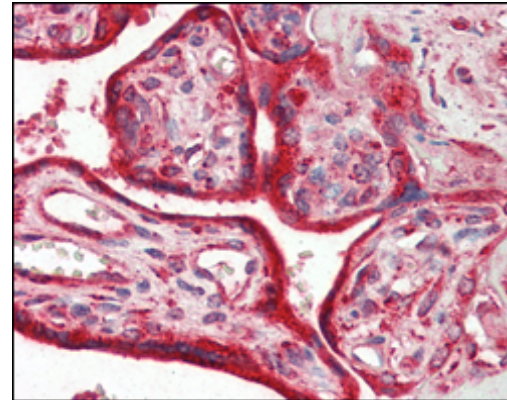
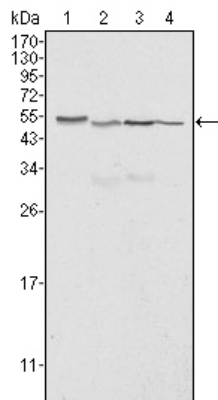
Confocal immunofluorescence analysis of SKBR-3 (left) and A549 (right) cells using Calreticulin mouse mAb (green). Red: Actin filaments have been labeled with DY-554 phalloidin. Blue: DRAQ5 fluorescent DNA dye.



fluorescent DNA dye.

Western blot detection of Calreticulin in THP-1, MCF7, HCT116 and Jurkat cell lysates using Calreticulin mouse mAb (1:3000 diluted). Predicted band size: 48 kDa. Observed band size: 55 kDa.

Catalog Number: 168481



Western blot analysis using Calreticulin mouse mAb against HeLa (1), A549 (2), NTERA2 (3) and MCF-7 (4) cell lysate.

Immunohistochemical analysis of paraffin-embedded human placenta tissues using Calreticulin mouse mAb.