

Anti-GPR84 antibody



Catalog Number: 175481

Product name

Anti-GPR84 antibody

Specificity

Human, Mouse, Rat, Dog, Cow, Horse, Sheep, Monkey

Antibody description

Rabbit polyclonal antibody to GPR84

Preparation

This antigen of this antibody was klh conjugated synthetic peptide derived from human gpcr ex33/gpr84 1-100/396

Formulation

Liquid, 0.01M TBS(pH7.4) with 1% BSA, 0.03% Proclin300 and 50% Glycerol.

Storage

Store at -20°C for one year. Avoid repeated freeze/thaw cycles. The lyophilized antibody is stable at room temperature for at least one month and for greater than a year when kept at -20°C. When reconstituted in sterile pH 7.4 0.01M PBS or diluent of antibody the antibody is stable for at least two weeks at 2-4°C.

Clonality

Polyclonal

Ig Type

Rabbit IgG

Applications

WB, FC

Dilutions

WB:1:500-2000

FC:3ug/Test

Validations

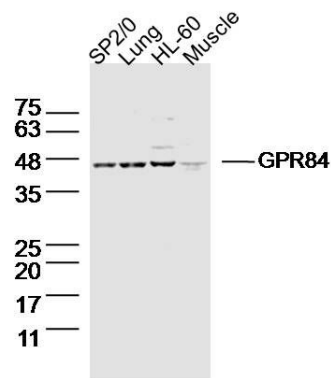
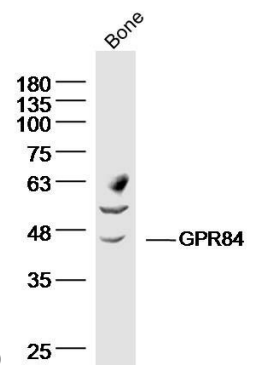


Fig1: Sample:; SP2/0 (mouse)Cell Lysate at 40 ug; Lung(mouse) Lysate at 40 ug; HL-60 (human)Cell Lysate at 40 ug; Muscle (mouse) Lysate at 40 ug; Primary: Anti- GPR84 at 1/300 dilution; Secondary: IRDye800CW Goat Anti-Rabbit IgG at 1/20000 dilution; Predicted band size: 44kD;



Observed band size: 44 kD

Fig2: Sample: bone (Rat) Lysate at 40 ug; Primary: Anti- GPR84 at 1/300 dilution; Secondary: IRDye800CW Goat Anti-Rabbit IgG at 1/20000 dilution; Predicted band size: 44kD; Observed band size: 44 kD