

Product name

PACT antibody

WB: 1:500-1:5000

IP: 1:200-1:2000

Specificity

Human, Mouse, Rat; other species not tested.

IHC: 1:20-1:200

IF: 1:10-1:100

Antibody description

PACT Rabbit Polyclonal antibody. Positive IF detected in HepG2 cells. Positive IHC detected in human prostate cancer tissue, human skin cancer tissue. Positive IP detected in mouse testis tissue. Positive WB detected in mouse testis tissue, PC-12 cells. Observed molecular weight by Western-blot: 35 kDa

Preparation

This antibody was obtained by immunization of PACT recombinant protein (Accession Number: NM_003690). Purification method: Antigen affinity purified.

Formulation

PBS with 0.1% sodium azide and 50% glycerol pH 7.3.

Storage

Store at -20°C. DO NOT ALIQUOT

Clonality

Polyclonal

Ig Type

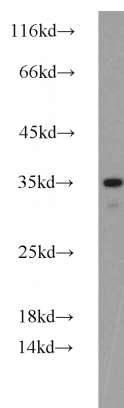
Rabbit IgG

Applications

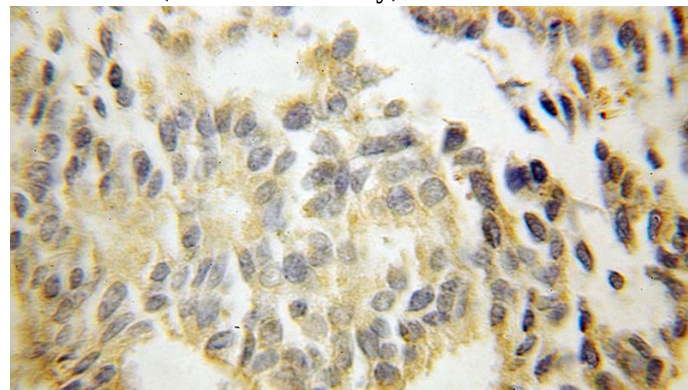
ELISA, WB, IHC, IF, IP

Dilutions

Recommended Dilution:

Validations

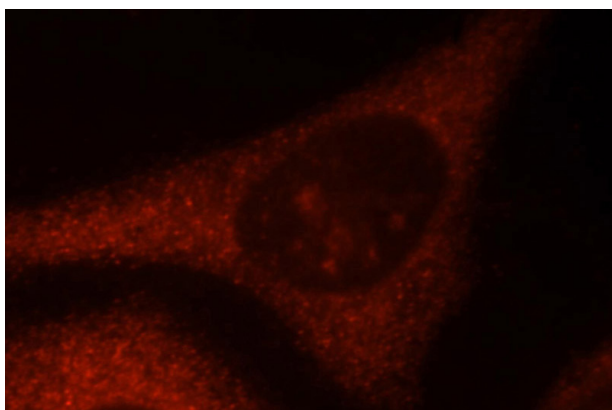
mouse testis tissue were subjected to SDS PAGE followed by western blot with Catalog No:113481(PRKRA antibody) at dilution of 1:800



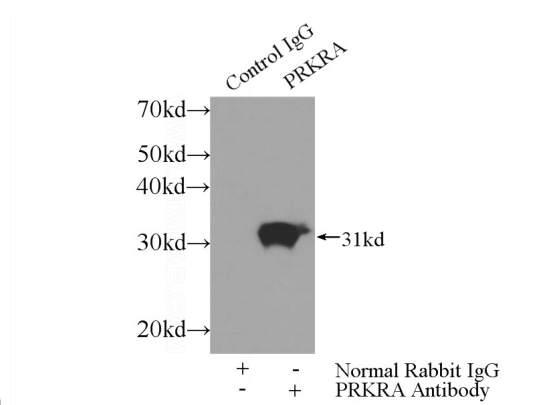
Immunohistochemical of paraffin-embedded human prostate cancer using Catalog No:113481(PRKRA antibody) at dilution of 1:100 (under 40x lens)

PACT antibody

Catalog Number: 113481



Immunofluorescent analysis of HepG2 cells, using PRKRA antibody Catalog No:113481 at 1:25 dilution and Rhodamine-labeled goat anti-rabbit



IgG (red).

IP Result of anti-PRKRA (IP:Catalog No:113481, 3ug; Detection:Catalog No:113481 1:700) with mouse testis tissue lysate 4000ug.