

SEC31A antibody

Catalog Number: 115081

Product name

SEC31A antibody

IP: 1:200-1:2000

IF: 1:10-1:100

Specificity

Human, Mouse, Rat; other species not tested.

Antibody description

SEC31A Rabbit Polyclonal antibody. Positive WB detected in HeLa cells, Jurkat cells. Positive IP detected in HeLa cells. Positive IF detected in HeLa cells. Observed molecular weight by Western-blot: 133 kDa

Preparation

This antibody was obtained by immunization of SEC31A recombinant protein (Accession Number: NM_001077206). Purification method: Antigen affinity purified.

Formulation

PBS with 0.02% sodium azide and 50% glycerol pH 7.3.

Storage

Store at -20°C. DO NOT ALIQUOT

Clonality

Polyclonal

Ig Type

Rabbit IgG

Applications

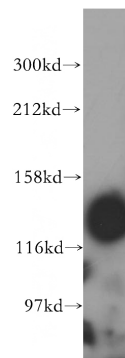
ELISA, WB, IP, IF

Dilutions

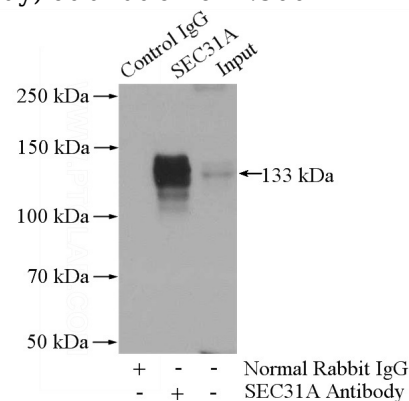
Recommended Dilution:

WB: 1:500-1:5000

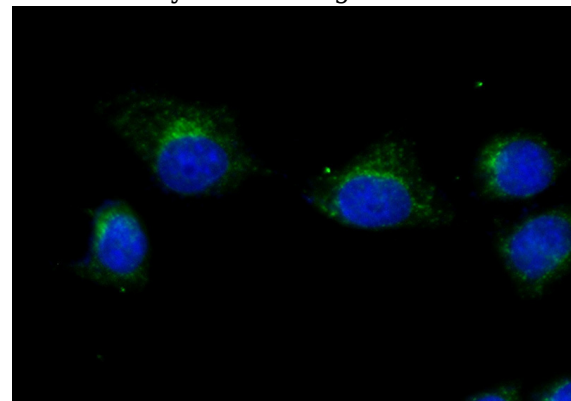
Validations



HeLa cells were subjected to SDS PAGE followed by western blot with Catalog No:115081(SEC31A antibody) at dilution of 1:500



IP Result of anti-SEC31A (IP:Catalog No:115081, 4ug; Detection:Catalog No:115081 1:500) with HeLa cells lysate 1080ug.



Immunofluorescent analysis of (-20oc Ethanol) fixed HeLa cells using Catalog

SEC31A antibody



Catalog Number: 115081

No:115081(SEC31A Antibody) at dilution of 1:25

and Alexa Fluor 488-conjugated AffiniPure Goat
Anti-Rabbit IgG(H+L)