

# KLF4 antibody

Catalog Number: 112081

## Product name

KLF4 antibody

## Specificity

Human, Mouse, Rat; other species not tested.

## Antibody description

KLF4 Rabbit Polyclonal antibody. Positive IP detected in HeLa cells. Positive WB detected in HeLa cells, A431 cells, HT-1080 cells, mouse testis tissue, NCCIT cell, NIH/3T3 cells, RAW264.7 cells. Positive IF detected in human embryonic stem cells. Positive IHC detected in human colon tissue, human spleen tissue, human tonsil tissue. Observed molecular weight by Western-blot: 50-60 kDa

## Preparation

This antibody was obtained by immunization of KLF4 recombinant protein (Accession Number: BC030811). Purification method: Antigen affinity purified.

## Formulation

PBS with 0.02% sodium azide and 50% glycerol pH 7.3.

## Storage

Store at -20°C. DO NOT ALIQUOT

## Clonality

Polyclonal

## Ig Type

Rabbit IgG

## Applications

ELISA, IHC, IP, IF, WB

## Dilutions

Recommended Dilution:

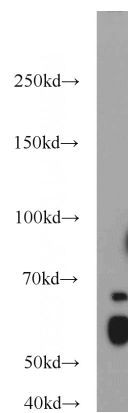
WB: 1:500-1:5000

IP: 1:200-1:2000

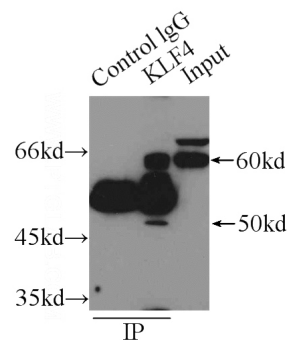
IHC: 1:20-1:200

IF: 1:20-1:200

## Validations



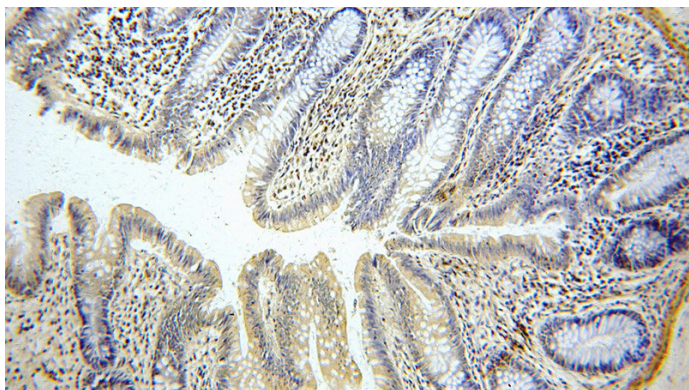
HeLa cells were subjected to SDS PAGE followed by western blot with Catalog No:112081(KLF4 antibody) at dilution of 1:1000



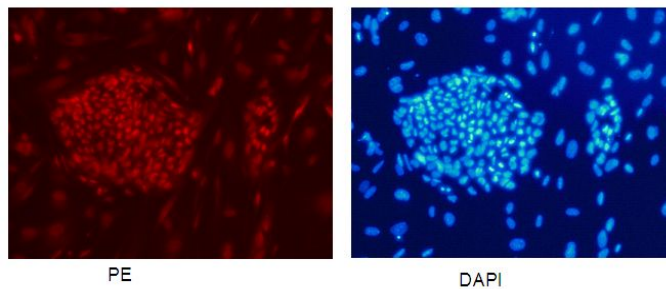
IP Result of anti-KLF4 (IP:Catalog No:112081, 3ug; Detection:Catalog No:112081 1:500) with HeLa cells lysate 4650ug.

# KLF4 antibody

Catalog Number: 112081



Immunohistochemical of paraffin-embedded human colon using Catalog No:112081(KLF4 antibody) at dilution of 1:50 (under 10x lens)



Confocal immunofluorescent analysis of human embryonic stem cells with Catalog No:112081 at dilution of 1:50. The PE shows staining with Catalog No:112081/PE. The DAPI shows nuclear staining by DAPI.