

Anti-VPREB1 antibody



Catalog Number: 141081

Product name

Anti-VPREB1 antibody

Specificity

Mouse VPREB1

Antibody description

Rabbit Polyclonal to Mouse VPREB1

Preparation

Produced in rabbits immunized with a synthetic peptide corresponding to the center region of the Mouse VPREB1, and purified by antigen affinity chromatography.

Formulation

0.2 μ m filtered solution in PBS

Storage

This antibody can be stored at 2°C-8°C for one month without detectable loss of activity. Antibody products are stable for twelve months from date of receipt when stored at -20°C to -80°C.

Preservative-Free.

Sodium azide is recommended to avoid contamination (final concentration 0.05%-0.1%). It is toxic to cells and should be disposed of

properly. Avoid repeated freeze-thaw cycles.

Clonality

Polyclonal

Ig Type

Rabbit IgG

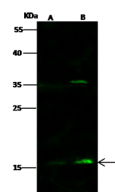
Applications

WB

Dilutions

WB: 5-20 μ g/ml

Validations



Lanes	A	B
Sample (whole cell lysate)	HepG2	THP1
Sample Volume (μ g/lane)	30	30
Gel	13% SDS-PAGE, reducing gel	
Recommended Concentration	5-20 μ g/ml	
Secondary Antibody	Dylight 800 labeled Antibody to Rabbit IgG (1:1), at 1:5000 dilution.	
Developed using Odyssey imaging system.		
Explanation	Predicted band size : 17 kDa Observed band size : 17 kDa Additional bands at : 36 kDa (We are unsure as to the identity of these extra bands.)	

VPREB1 Antibody, Rabbit PAb, Antigen Affinity Purified, Western blot