

Anti-Phospho-Smad2 (Ser467) Rabbit antibody



Catalog Number: 166771

Product name

WB

Anti-Phospho-Smad2 (Ser467) Rabbit antibody

Dilutions

Specificity

WB:1/500-1/1000

Human, Mouse, Rat

Antibody description

Phospho-Smad2 (Ser467) Rabbit polyclonal antibody

Preparation

Antigen: Peptide sequence around phosphorylation site of serine 467 (C-S-S-M-S(p)) derived from Human Smad2.

Formulation

Supplied at 1.0mg/mL in phosphate buffered saline (without Mg²⁺ and Ca²⁺), pH 7.4, 150mM NaCl, 0.02% sodium azide and 50% glycerol.

Storage

Store at 4°C short term. Store at -20°C long term. Avoid freeze / thaw cycle.

Clonality

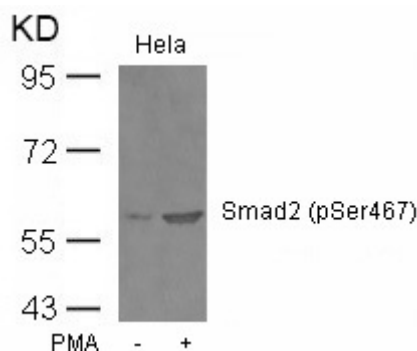
Polyclonal

Ig Type

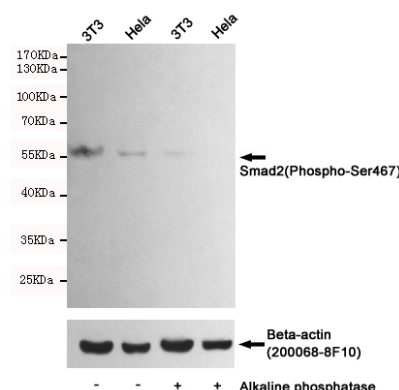
Rabbit IgG

Applications

Validations



Western blot analysis of extracts from HeLa cells untreated or treated with PMA using Smad2 (Phospho-Ser467) Antibody .



Western blot detection of Smad2 (Phospho-Ser467) in HeLa and 3T3 cells untreated or treated with Alkaline phosphatase using Smad2 (Phospho-Ser467) Rabbit pAb (dilution 1:500, upper) or u03b2-Actin Mouse mAb (200068-8F10, lower). Predicted band size: 60 kDa. Observed band size: 60 kDa.