

DCP2 Polyclonal Antibody



Catalog Number: 165771

Product name

DCP2 Polyclonal Antibody

Specificity

Human, Mouse, Rat

Antibody description

Polyclonal antibody to DCP2

Preparation

Antigen: Recombinant fusion protein containing a sequence corresponding to amino acids 1-240 of human DCP2 (NP_001229306.1).

Formulation

PBS with 0.02% sodium azide, 50% glycerol, pH7.3.

Storage

Store at -20°C. Avoid freeze / thaw cycles.

Clonality

Polyclonal

Ig Type

Rabbit IgG

Applications

WB, IHC, IF

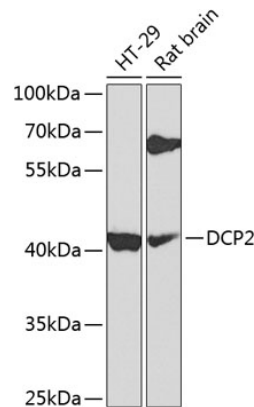
Dilutions

WB 1:500 - 1:2000

IHC 1:50 - 1:100

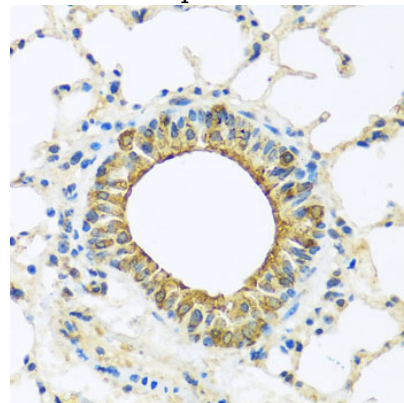
IF 1:50 - 1:100

Validations



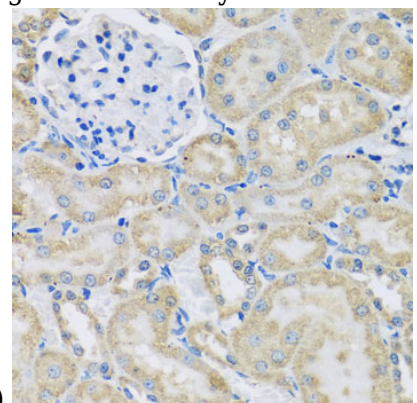
Western blot - DCP2 Polyclonal Antibody

Western blot analysis of extracts of various cell lines, using DCP2 antibody at 1:1000 dilution. Secondary antibody: HRP Goat Anti-Rabbit IgG (H+L) at 1:10000 dilution. Lysates/proteins: 25ug per lane. Blocking buffer: 3% nonfat dry milk in TBST. Detection: ECL Basic Kit. Exposure time: 90s.



Immunohistochemistry - DCP2 Polyclonal Antibody

Immunohistochemistry of paraffin-embedded mouse lung using DCP2 antibody at dilution of



1:100 (40x lens).

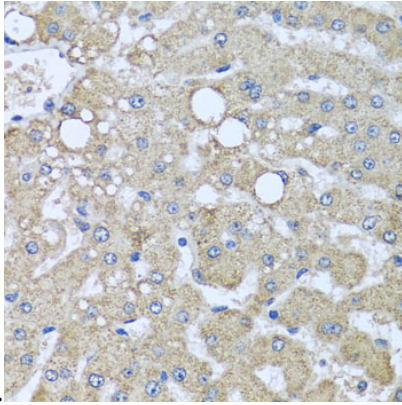
DCP2 Polyclonal Antibody



Catalog Number: 165771

Immunohistochemistry - DCP2 Polyclonal Antibody

Immunohistochemistry of paraffin-embedded rat kidney using DCP2 antibody at dilution of 1:100

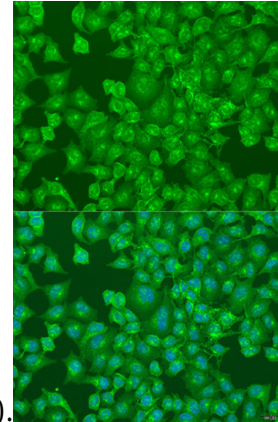


(40x lens).

Immunohistochemistry - DCP2 Polyclonal Antibody

Immunohistochemistry of paraffin-embedded

human liver injury using DCP2 antibody at dilution



of 1:100 (40x lens).

Immunofluorescence - DCP2 Polyclonal Antibody

Immunofluorescence analysis of U2OS cells using DCP2 antibody at dilution of 1:100. Blue: DAPI for nuclear staining.