

MTF1 antibody

Catalog Number: 112771

Product name

MTF1 antibody

Specificity

Human, Mouse; other species not tested.

Antibody description

MTF1 Rabbit Polyclonal antibody. Positive WB detected in mouse liver tissue, Jurkat cells, mouse brain tissue, mouse heart tissue, mouse skeletal muscle tissue. Observed molecular weight by Western-blot: 65-70 kDa

Preparation

This antibody was obtained by immunization of MTF1 recombinant protein (Accession Number: XM_047421170). Purification method: Antigen affinity purified.

Formulation

PBS with 0.1% sodium azide and 50% glycerol pH 7.3.

Storage

Store at -20°C. DO NOT ALIQUOT

Clonality

Polyclonal

Ig Type

Rabbit IgG

Applications

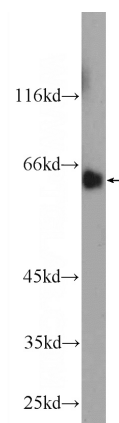
ELISA, WB

Dilutions

Recommended Dilution:

WB: 1:500-1:5000

Validations



mouse liver tissue were subjected to SDS PAGE followed by western blot with Catalog No:112771(MTF1 Antibody) at dilution of 1:1000