

LAMR1,RPSA antibody



Catalog Number: 107371

Product name

LAMR1,RPSA antibody

Specificity

Human, Mouse; other species not tested.

Antibody description

LAMR1,RPSA Mouse Monoclonal antibody.
Positive IHC detected in human lung cancer tissue. Positive WB detected in Hela cells.
Observed molecular weight by Western-blot: 40 kDa

Preparation

This antibody was obtained by immunization of LAMR1,RPSA recombinant protein (Accession Number: NM_002295). Purification method: Caprylic acid/ammonium sulfate precipitation.

Formulation

PBS with 0.1% sodium azide and 50% glycerol pH 7.3.

Storage

Store at -20°C. DO NOT ALIQUOT

Clonality

Monoclonal

Ig Type

Mouse IgG2b

Applications

ELISA, WB, IHC

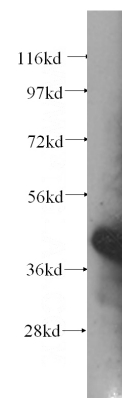
Dilutions

Recommended Dilution:

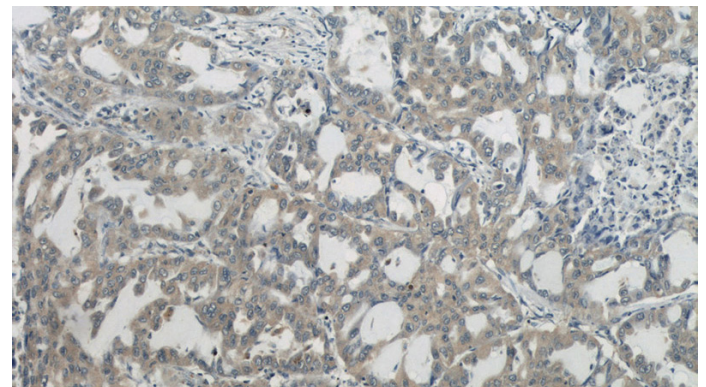
WB: 1:500-1:5000

IHC: 1:20-1:200

Validations



HeLa cells were subjected to SDS PAGE followed by western blot with Catalog No:107371(LAMR1,RPSA antibody) at dilution of 1:500



Immunohistochemistry of paraffin-embedded human lung cancer slide using Catalog No:107371(LAMR1,RPSA Antibody) at dilution of 1:50