

ERO1LB antibody



Catalog Number: 110371

Product name

ERO1LB antibody

Specificity

Human, Mouse, Rat; other species not tested.

Antibody description

ERO1LB Rabbit Polyclonal antibody. Positive WB detected in HeLa cells, human placenta tissue. Positive IHC detected in human pancreas cancer tissue, human oesophagus tissue, human small intestine tissue. Observed molecular weight by Western-blot: 40~50kd

Preparation

This antibody was obtained by immunization of ERO1LB recombinant protein (Accession Number: NM_019891). Purification method: Antigen affinity purified.

Formulation

PBS with 0.1% sodium azide and 50% glycerol pH 7.3.

Storage

Store at -20°C. DO NOT ALIQUOT

Clonality

Polyclonal

Ig Type

Rabbit IgG

Applications

ELISA, WB, IHC

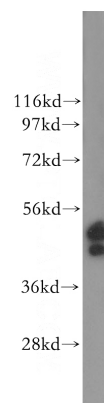
Dilutions

Recommended Dilution:

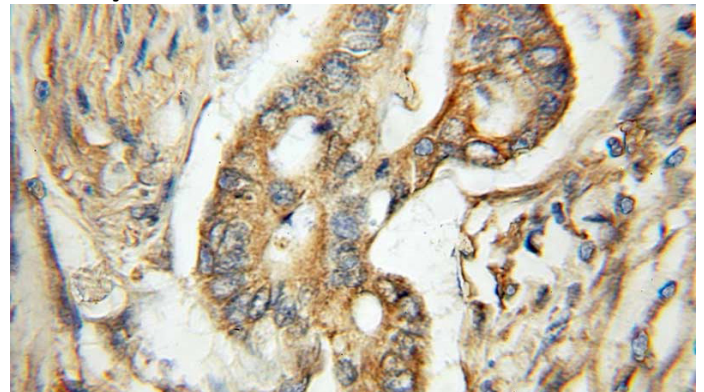
WB: 1:500-1:5000

IHC: 1:20-1:200

Validations



HeLa cells were subjected to SDS PAGE followed by western blot with Catalog No:110371(ERO1LB antibody) at dilution of 1:500



Immunohistochemical of paraffin-embedded human pancreas cancer using Catalog No:110371(ERO1LB antibody) at dilution of 1:50 (under 40x lens)